

Timberline

Curved Splice & Splice Shelves



Curved Splice & Splice Shelves

FEATURES

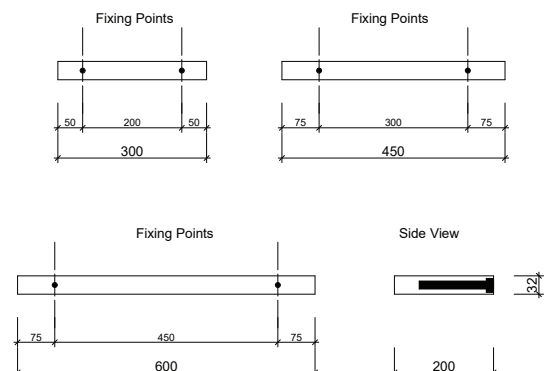
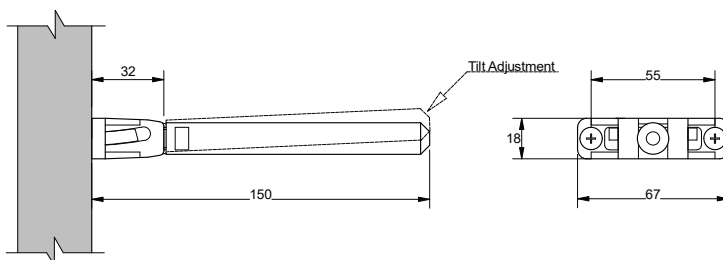
- Perfect for displaying accessories in your bathroom.
- Available in two styles with curved or square ends
- Available in four practical sizes – 300mm, 450mm, 600mm and 900mm with a standard depth of 200mm.
- Other sizes available on request (additional charges may apply).
- Includes hidden internal brackets for sturdy installation.

INSTALLATION INSTRUCTIONS

1. Studs / noggins must be provided for secure mounting.
2. Place bracket on wall making sure the arrow on the bracket body is pointing upwards and fasten brackets to the wall through the mounting holes provided.
3. Adjust bracket until level by turning the main stem and then tighten the grub screw at the rear base of the bracket to lock in place.
4. Squeeze some silicone into the mounting holes in the shelf and push shelf all the way on to the brackets.
5. Allow 24 hours to dry before using shelf.



Comes complete with two super sturdy mounting brackets.



Custom Size Shelves Available Min Depth = 185mm , Max Depth = 250mm. POA. Weight Restrictions = 5kg.