

Timberline

## Handle Collection



# Cabinet Handles

---

What a selection! Choose from chrome, brushed, black or gold - long or short - square or curved. We've got them all! Customise your cabinet with any of these stunning handle options at no extra cost!

---

## ARCH HANDLE

Available in 244mm & 340mm.



Chrome



Brushed Nickel



Black



Brushed Gold

---

## CRESCENT HANDLE\*

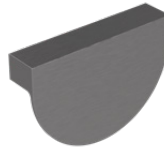
Attaches in the standard position towards top of door and drawer fronts. Available in 96mm.



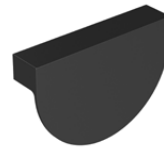
Chrome



Brushed Nickel



Gunmetal



Black



Brushed Gold

---

## CURVE HANDLE

Available In 198mm & 359mm.



Chrome



Brushed Nickel



Black



Brushed Gold

---

## D HANDLE

Available in 104mm\*, 138mm\*, 230mm, 361mm & 457mm.



Chrome



Brushed Nickel



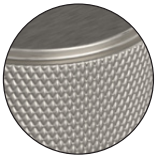
Black



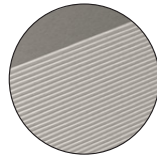
Brushed Gold

---

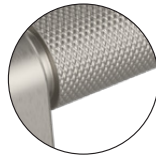
\*Denotes handles suitable size for shaker fronts.



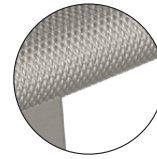
◀ Duke detail



◀ Eclipse detail



◀ Knurled Bar detail



◀ Lord & Monarch detail

## DISC HANDLE

Available in 100mm & 200mm.



Full



Half

### Notes for Disc Handles:

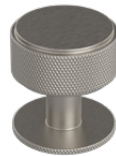
200mm able to be split across two drawers or doors. Please note the configuration when ordering. Available in any paint colour.

## DUKE KNOB\*

Available in 35mm.



Chrome



Brushed Nickel



Gunmetal



Black



Brushed Gold

## DUKE T BAR\*

Available in 80mm.



Chrome



Brushed Nickel



Gunmetal



Black



Brushed Gold

## DUKE HANDLE

Available in 200mm & 400mm.



Chrome



Brushed Nickel



Gunmetal



Black

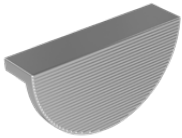


Brushed Gold

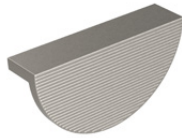
\*Denotes handles suitable size for shaker fronts.

## ECLIPSE HANDLE\*

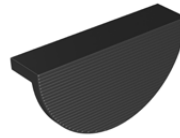
Attaches in the standard position towards top of door and drawer fronts. Available in 110mm.



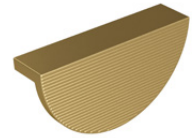
Chrome



Brushed Nickel



Black



Brushed Gold

## FINGERPULL\*



Woodgrain



Painted

### Notes for Fingerpull Option:

Usable drawer height is reduced with fingerpull. Drawer and door widths might vary depending on cabinet layout. Available in all colours.

## FLAT KNOB\*

Available in 26mm.



Chrome



Brushed Nickel



Black



Brushed Gold

## KNURLED BAR

Available in 106mm\*, 202mm & 330mm.



Chrome



Brushed Nickel



Gunmetal



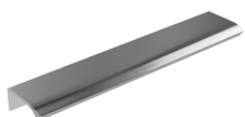
Black



Brushed Gold

## LOFT HANDLE

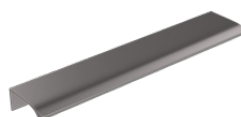
Attaches on the top of door and drawer fronts. Available in 200mm\* & 350mm.



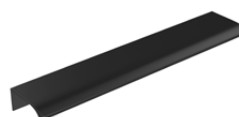
Chrome



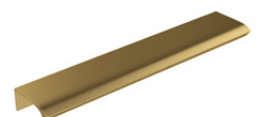
Brushed Nickel



Gunmetal



Black



Brushed Gold

\*Denotes handles suitable size for shaker fronts.

---

## LORD HANDLE

Available In 120mm\*, 215mm, 310mm & 410mm.



Chrome



Brushed Nickel



Gunmetal



Black



Brushed Gold

---

## MONARCH HANDLE

Available In 150mm\*, 240mm, 340mm & 435mm.



Chrome



Brushed Nickel



Gunmetal



Black



Brushed Gold

---

## OVA HANDLE

Attaches on the top of door and drawer fronts. Available in 100mm\*, 200mm\* & 350mm.



Chrome



Brushed Nickel



Black



Brushed Gold

---

## RETRO HANDLE\*

Available In 105mm.



Chrome



Brushed Nickel



Pewter



Black



Brushed Gold

---

## ROUND KNOB\*

Available in 26mm.



Chrome



Brushed Nickel



Black



Brushed Gold

---

\*Denotes handles suitable size for shaker fronts.

---

## SOLID LIP HANDLE

Attaches in the standard position towards top of door and drawer fronts. Available in 50mm\* & 178mm.



Chrome 50



Brushed Nickel 50



Black 50



Brushed Gold 50



Chrome 178



Brushed Nickel 178



Black 178



Brushed Gold 178

---

## SQUARE HANDLE

Available in 224mm & 352mm.



Chrome



Brushed Nickel



Black



Brushed Gold

---

## WAVE HANDLE

Attaches on the top of door and drawer fronts. Available in 200mm\* & 350mm.



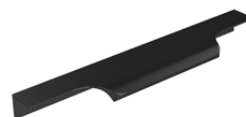
Chrome



Brushed Nickel



Gunmetal



Black



Brushed Gold

---

\*Denotes handles suitable size for shaker fronts.



## HANDLE MOUNTING HOLE CENTRES

<b>ARCH</b>		<b>ECLIPSE</b>		<b>OVA</b>	
244mm	224mm Holes	110mm	96mm Holes	100mm	64mm
340mm	320mm Holes			200mm	128mm
<b>CRESCENT</b>		<b>KNURLED BAR</b>		350mm	256mm
96mm	64mm Holes	106mm	96mm Holes	<b>RETRO</b>	
<b>CURVE</b>		202mm	192mm Holes	105mm	64mm Holes
198mm	160mm Holes	330mm	320mm Holes	<b>SOLID LIP</b>	
359mm	320mm Holes	<b>LOFT</b>		50mm	32mm Holes
<b>DUKE</b>		200mm	160mm Holes	178mm	160mm Holes
200mm	128mm Holes	350mm	256mm Holes	<b>SQUARE</b>	
400mm	320mm Holes	<b>LORD</b>		224mm	192mm Holes
<b>D</b>		120mm	96mm Holes	352mm	320mm Holes
104mm	96mm Holes	215mm	192mm Holes	<b>WAVE</b>	
138mm	128mm Holes	310mm	288mm Holes	200mm	160mm Holes
230mm	224mm Holes	410mm	384mm Holes	350mm	256mm Holes
361mm	352mm Holes	<b>MONARCH</b>			
457mm	448mm Holes	150mm	96mm Holes		
<b>DISC</b>		240mm	192mm Holes		
100mm	32mm Holes	340mm	288mm Holes		
200mm	96mm Holes	435mm	384mm Holes		

