

Customising Options

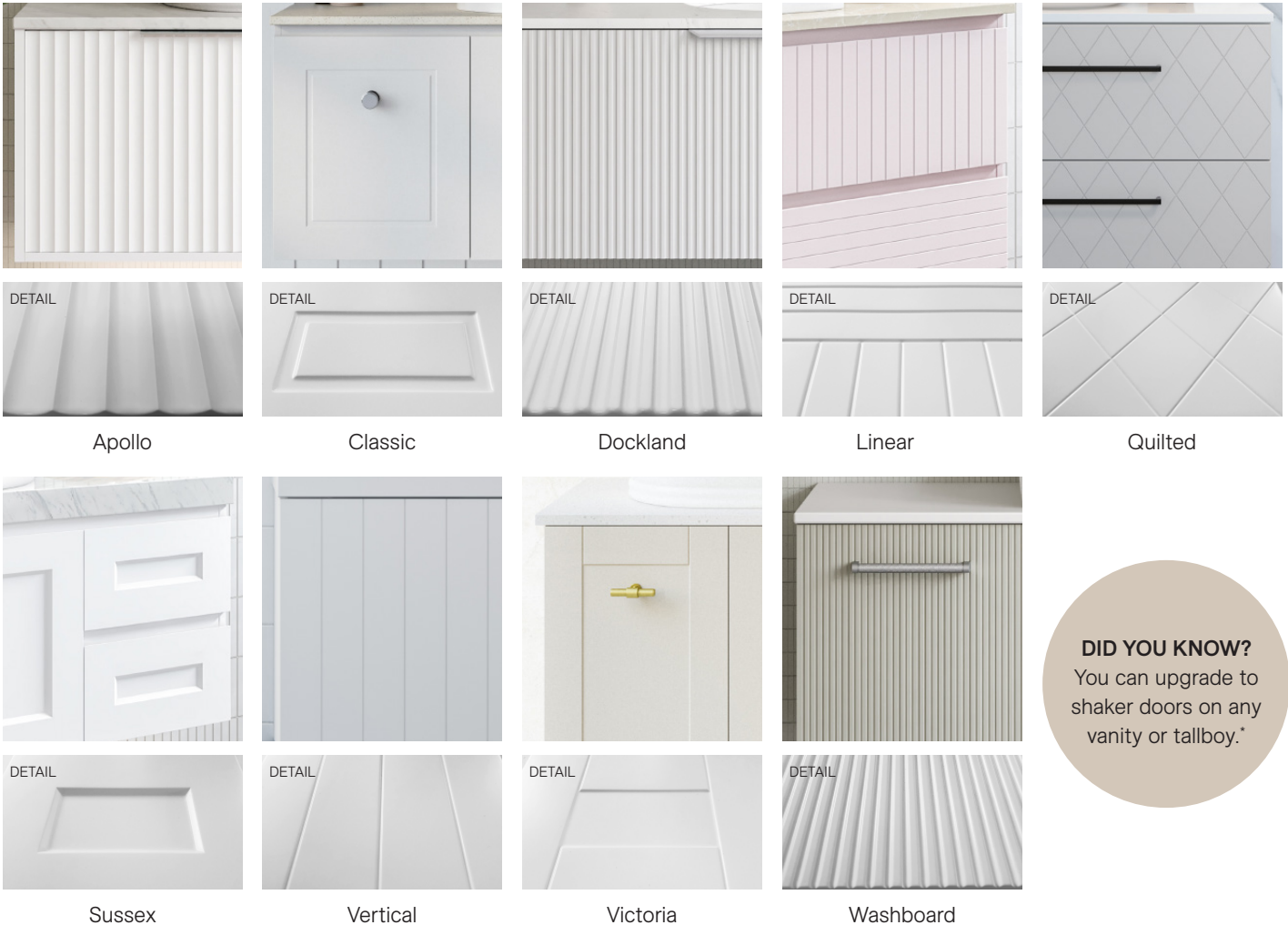


Cabinet & Shaving Cabinet Upgrades

CABINET & SHAVING CABINET CUSTOMISING OPTIONS



DOOR/DRAWER UPGRADE OPTIONS*



DID YOU KNOW?
You can upgrade to shaker doors on any vanity or tallboy.*

DOOR/DRAWER UPGRADE OPTIONS

Upgrade Options (Price per door/drawer)		
	SKU	RRP
Upgrade Vanity or Tallboy to Apollo Fluted	ROU-OPT-APOLLO	\$186
Upgrade Vanity or Tallboy to Classic Routed Shaker	ROU-OPT-CLASSIC	\$120
Upgrade Vanity or Tallboy to Dockland Fluted	ROU-OPT-DOCKLAND	\$186
Upgrade Vanity or Tallboy to Linear Routed	ROU-OPT-LINEAR	\$120
Upgrade Vanity or Tallboy to Quilted Routed	ROU-OPT-QUILTED	\$120
Upgrade Vanity or Tallboy to Sussex Routed Shaker	ROU-OPT-SUSSEX	\$186
Upgrade Vanity or Tallboy to Victoria Shaker	ROU-OPT-VICTORIA	\$186
Upgrade Vanity or Tallboy to Washboard Shaker	ROU-OPT-WASHBOARD	\$186
Upgrade Vanity or Tallboy to Vertical Routed	ROU-OPT-VERTICAL	\$120

SPECIAL CABINET COLOUR OPTIONS

Colour Options (Price per cabinet)		
	SKU	RRP
Laminex Melamine Special Colours	COL-OPT-LML	\$244
Polytec Melamine Special Colours	COL-OPT-PML	\$244
Polytec Ravine/Legato Special Colours	COL-OPT-PRL	\$337
Special Paint Colour	COL-OPT-SPC	\$244
All other Non Standard Melamine Colours		POA

*Drawer and door widths might vary depending on cabinet layout. Available in painted finishes only. Caprio, Deco, Farmhouse, Regency and Retro routes non-upgradeable for all cabinets.

FILLER & FULL END PANELS

These panels ensure that your drawers/doors are mounted flush beside a wall. For vanities, the top extends over the panel creating a seamless appearance.

Filler Panels		
	SKU	RRP
16mm Left Vanity Full End Panel (Vanity height x depth)	PNL-OPT-V-FULL-L	\$114
16mm Left Vanity Filler Panel (100mm wide x vanity height). (For flush mounting beside a wall).	PNL-OPT-V-FILL-L	\$59
16mm Left Tallboy Filler Panel (100mm wide x tallboy height). (For flush mounting beside a wall).	PNL-OPT-T-FILL-L	\$89
16mm Left Shaving Cabinet Filler Panel (shaver depth x shaver height). (For flush mounting beside a wall).	PNL-OPT-S-FIL-L	\$71

NOTE: Right-hand side also available. Order by replacing -L with -R in the relevant SKU.

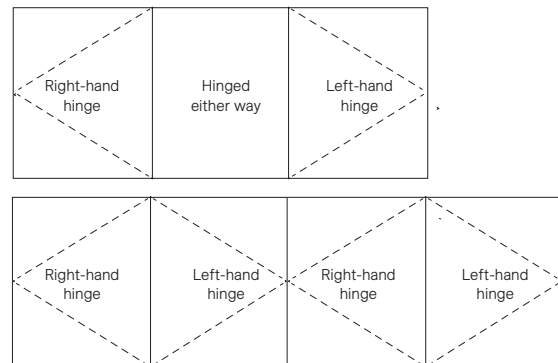


CABINET UPGRADE OPTIONS

Silver/Gold/Platinum Upgrade Packages		
	SKU	RRP
Upgrade Package Silver To Gold (per vanity) (10 year warranty. Includes drawer upgrade and bamboo storage boxes)	UPG-OPT-PACK-SG	\$391
Upgrade Package Silver To Platinum (per vanity) (20 year warranty. Includes drawer upgrade, graphite interior, bamboo storage boxes with dividers and powerpoint)	UPG-OPT-PACK-SP	\$871
Upgrade Package Gold To Platinum (per vanity) (20 year warranty. Includes drawer upgrade, graphite interior, bamboo storage boxes with dividers and powerpoint)	UPG-OPT-PACK-GP	\$480

Cabinet Options		
	SKU	RRP
Upgrade Gold/Platinum drawers to Push-To-Open runners (per drawer)	UPG-OPT-DRW-PTO	\$253
Upgrade door to Push-To-Open hinge (per door)	UPG-OPT-DOOR-PTO	\$61
Add extra Silver Drawer (per drawer). Note: Silver drawers can only be added to vanities in the Silver range	UPG-OPT-DRW-SILVER	\$129
Add extra Gold Drawer (per drawer). Note: Gold drawers can only be added to vanities in the Gold range	UPG-OPT-DRW-GOLD	\$174
Add extra Platinum Drawer (per drawer). Note: Platinum drawers can only be added to vanities in the Platinum range	UPG-OPT-DRW-PLAT	\$210
Delete drawers and have doors only		No Cost
Increase Vanity Cabinet Height or Depth (max 150mm) (Does not apply to top. POA)	RSZ-OPT-V	\$129

Shaving Cabinet Options		
	SKU	RRP
Increase Shaving Cabinet Height to max 900mm, 600 - 750mm wide shavers	RSZ-OPT-SC-750	\$193
Increase Shaving Cabinet Height to max 900mm, 900 - 1200mm wide shavers	RSZ-OPT-SC-1200	\$244
Increase Shaving Cabinet Height to max 900mm, 1500 - 1800mm wide shavers	RSZ-OPT-SC-1800	\$366
Upgrade standard size Gold Shaving Cabinet to glass shelves	UPG-OPT-STDGLAS	\$137
Upgrade non-standard size Gold Shaving Cabinet to glass shelves	UPG-OPT-SPECGLAS	\$314
Add Magnifying Mirror to Shaving Cabinet (3x Magnification)	UPG-OPT-MAGM	\$105
Upgrade Shaving Cabinet to panoramic hinging	UPG-OPT-PANORAMIC	\$153



CABINET POWERPOINTS

Leave your shaver charging or your hair dryer permanently plugged in for easy use. Cabinet powerpoints are a simple but practical addition. For multi-drawer cabinets just let us know which drawer you would like your in-drawer powerpoint in.

Please note that an electrician will be required to hardwire the powerpoint during installation. Standard position for in-drawer powerpoints is top left drawer unless specified otherwise.

Powerpoint		
	SKU	RRP
In-drawer Powerpoint	PPT-OPT-INDRW	\$164
Shaving Cabinet Powerpoint in centre (To match Gold Inclusions)	PPT-OPT-GOLD-C	\$119
Shaving Cabinet Powerpoint sent loose (To match Gold Inclusions)	PPT-OPT-GOLD-N	\$119
Shaving Cabinet Powerpoint in centre (To match Platinum Inclusions)	PPT-OPT-PLAT-C	\$128
Shaving Cabinet Powerpoint sent loose (To match Platinum Inclusions)	PPT-OPT-PLAT-N	\$128

NOTE: Left- and Right-hand side also available.
Order by replacing -C with -L or -R in the relevant SKU.



In-Drawer Powerpoint



Shaving Cabinet Powerpoint (Gold)



Shaving Cabinet Powerpoint (Platinum)

4L STAINLESS STEEL BIN

Easy to install, easy to clean and easy to use! Keeping your new bathroom space neat and tidy is easy with your new stainless steel bin. Complete with push-to-open lid for ease of use.

4L Stainless Steel Bin		
	SKU	RRP
4L Stainless Steel Bin	WB-OPT-BIN	\$115

Dimensions: 210mm W x 140mm D x 270mm H Volume: 4L

NOTE: Alterations to the size and position of the cabinet internal shelf will be made to accommodate for the bin. These will be sent loose to be attached onsite. If your vanity has a routed front, routing will be reduced to 3mm. Only available on units with doors (not available on all drawer units).



Organiser Systems

SLOTTED EDGE & STEEL DIVIDERS

These modular drawer dividers easily slide into the slotted bamboo to create flexible partitions. Use them alone or with our bamboo storage trays for ultimate organisation. Dividers are sold per drawer and include one or two dividers based on drawer width.

Organiser System	SKU	RRP
01. Bamboo Slotted Edge Piece (Nominate length)	BBB-ORG-EDGE	\$34
02. Steel Drawer Divider - Straight	STE-ORG-STR	\$19
03. Steel Drawer Divider - Bent	STE-ORG-BENT	\$22



*Only available on Gold & Platinum drawers. 03. Available in standard depth drawers only.

BAMBOO STORAGE TRAYS

Stylish and practical, these bamboo storage trays are available in four modular sizes that can either be used individually or slipped into our modular drawer divider system. With easy-to-clean coating and beautiful finger jointed corners, they'll impress your visitors and friends.

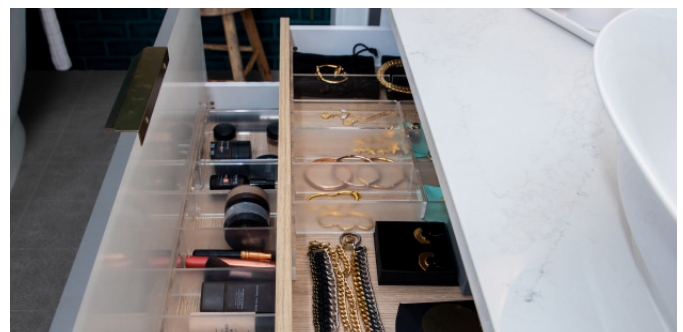
Bamboo Boxes	SKU	RRP
01. 100 x 300 Bamboo Box	BBB-ORG-100-300	\$37
02. 100 x 200 Bamboo Box	BBB-ORG-100-200	\$26
03. 200 x 200 Bamboo Box	BBB-ORG-200-200	\$43
04. 100 x 100 Bamboo Box	BBB-ORG-100-100	\$19



INTERNAL TOP DRAWER (Embrace & Sutherland House Exclusive)

Why not add a hidden internal drawer for some added storage? It fits snugly behind the outer top drawer and includes an oak finish drawer front and soft-close drawer runners. This drawer can also house the optional drawer storage system which is purchased as a separate option (see next page).

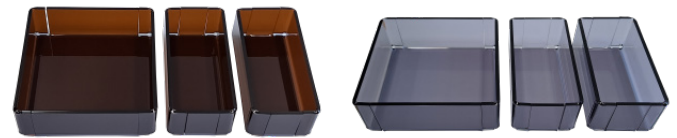
Organiser System	SKU	RRP
Storage Queen Internal Top Drawer	SHC-OPT-V-INTDRAWER	\$346



NOTE: Not suitable for vanities with under counter basin/s. Price per drawer. Please confirm whether location is to be on the left- or right-hand side for 1200mm, 1500mm and 1800mm vanities.

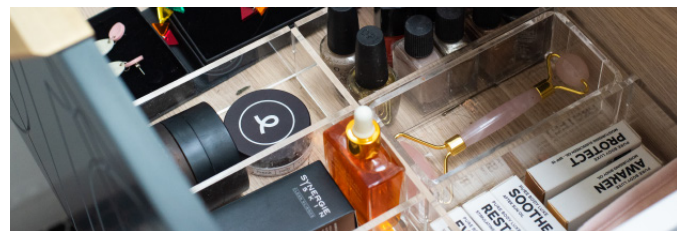
DRAWER ORGANISER SYSTEM *(Embrace & Sutherland House Exclusive)*

This addition offers practical storage for all your essentials with movable containers that are functional and easy to clean. It can be added to any size vanity and will be adjusted to suit your drawer size and layout. Proudly made in Australia.



Amber

Grey



Clear

Organiser System		
	SKU	RRP
Storage Queen Clear Vanity Storage System	SHC-OPT-V-DIVCLEAR	\$216
Storage Queen Amber Vanity Storage System	SHC-OPT-V-DIVAMBER	\$216
Storage Queen Grey Vanity Storage System	SHC-OPT-V-DIVGREY	\$216

NOTE: Number of dividers will vary depending on size of drawer. Price per drawer.

SHAVING CABINET ORGANISER SYSTEM *(Sutherland House Exclusive)*

This has to be the most ingenious option for make up storage ever invented - mounted right where you need them on the inside of the mirror door. Each set includes two hanging rails and four hanging storage pockets.



Amber

Grey



Clear

Organiser System		
	SKU	RRP
Storage Queen Clear Shaver Storage System	SHC-OPT-S-CLEAR-D1	\$216
Storage Queen Amber Shaver Storage System	SHC-OPT-S-AMBER-D1	\$216
Storage Queen Grey Shaver Storage System	SHC-OPT-S-GREY-D1	\$216

NOTE: Codes shown with mounted on door 1 your shaver. Add to any door by replacing -D1 with -D2, -D3 or -D4 in the relevant SKU.

HAIR DRYER STORAGE & POWERPOINT *(Sutherland House Exclusive)*

This simple solution includes a perfect hole in the shaving cabinet shelf along with a powerpoint so that you can leave it permanently plugged in and ready to go. Make sure to get your electrician to provide wiring for the power point and then have them fit the point in your chosen location when installing the cabinet.



Organiser System		
	SKU	RRP
Storage Queen Hairdryer Storage and Power Point to Shaving Cabinet	SHC-OPT-S-DRYER	\$185

NOTE: Shaver power points will be sent loose for installation on site.

Cabinet Lighting

These beautiful lighting kits can be ordered as optional extras on almost any vanity, shaving cabinet or tallboy. They come fully installed with their own transformer. All you need to do is have your electrician provide a connection and your chosen switching.



Under Cabinet Lighting Kit

This can mount under any shaving cabinet, or wall hung vanity or tallboy. It is a fantastic option for night lighting or adding stylish ambience to your bathroom. Customisation is necessary for integrating lighting with floor standing or on leg units.



Under Top Lighting Kit

This very attractive LED light strip fits between your cabinet and the vanity top providing a strip of light to the front and sides of your vanity. The outcome is nothing short of amazing.



Denver Shaving Cabinet Side Lighting Kit

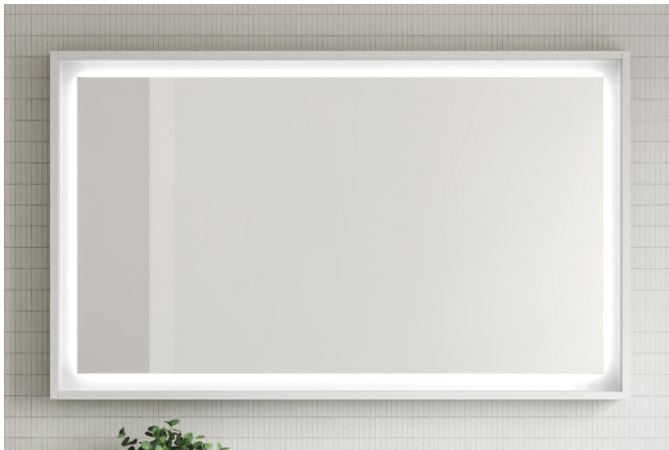
To get outstanding facial lighting on your Denver shaving cabinet add this light option. It provides a strip of LED lighting for excellent and practical lighting while using the mirror.

Cabinet Lighting		
	SKU	RRP
LED Under Cabinet Vanity Lighting kit installed complete with hardwire transformer	LED-L-UNDERCAB-V	\$413
LED Under Shaving Cabinet Lighting kit installed complete with hardwire transformer on left	LED-L-UNDERCAB-S-L	\$413
LED Under Shaving Cabinet Lighting kit installed complete with hardwire transformer on right	LED-L-UNDERCAB-S-R	\$413
LED Under Top Lighting Kit installed complete with hardwire transformer	LED-L-UNDERTOP	\$873
LED Denver Side Lighting Kit installed complete with hardwire transformer	LED-L-DENVER	\$637
LED Light Dimmer	LED-L-DIMMER	\$249

NOTE: An electrician will be required to provide in wall wiring and provision for an on/off switch before the bathroom walls are sheeted. All lighting kits have a 1 year warranty. If LED is chosen for a shaving cabinet or vanity please note style and size may vary slightly. Warm white lighting is standard (cool white available on request at no extra cost).

Mirror Lighting

There is nothing quite as stunning as clever lighting. It accentuates good design and gives a beautiful ambience. Every good interior design must use a clever balance of natural and ancillary lighting. That's exactly where the right mirror lighting comes in!



Halifax

With similar effects to the Denver lighting kit, this option gives you a border of light around the perimeter of the Halifax mirror. It is not only eye catching but also a very practical illumination.



Brooklyn

This option gives you a border of light around the perimeter of the Brooklyn mirror.



Oxford

Illuminate the frame of the Oxford Mirror by adding a lighting kit. This will take your mirror to the next level, complementing the touch of class it boasts while assisting practically by creating extra light for everyday use.

NOTE: An electrician will be required to provide in wall wiring and provision for an on/off switch before the bathroom walls are sheeted. All lighting kits have a 1 year warranty. If LED is chosen for a shaving cabinet or vanity please note style and size may vary slightly. Warm white lighting is standard (cool white available on request at no extra cost).

Mirror Lighting

	SKU	RRP
LED Mirror Lighting Kit installed complete with hardwire transformer	LED-L-MIRROR	\$413

Available on all mirrors.

Vanity Tops – What's the Difference?

What really is the difference between our various vanity top options? Which is better? See the pros and cons below. It all comes down to your personal choice... that's why we have them all.

NOTE: Due to the manufacturing process ceramic tops will vary slightly from their nominal stated sizes. Use the dimensions provided as a guide only. Due to this ceramic tops are not recommended for wall to wall installations.



Mineral Composite Vanity Tops

Mineral composite tops are heat formed to an exact mould and back filled with a heavy compound.

- ✓ Massive range of sizes
- ✓ Consistently smooth and flat
- ✓ Durable and strong
- ✓ Easy to repair if scratched
- ✓ Not susceptible to chipping
- ✓ 10 year warranty
- ✓ Australian made
- ✓ Custom sizes for wall to wall fitting (if required)
- ✗ Susceptible to heat damage (e.g. hair straightener)



Ceramic Vanity Tops

Ceramic vanity tops use porcelain ceramic moulding techniques for a traditional look and feel.

- ✓ Traditional look and feel
- ✓ Glassy finish makes it easy to clean
- ✓ Overflow
- ✓ 5 year warranty
- ✓ Heat resistant
- ✗ Susceptible to chipping
- ✗ Smaller range of sizes
- ✗ Surface variations to be expected due to ceramic tops being hand made from natural materials
- ✗ Susceptible to cracking due to impact



Matt Dolomite Vanity Tops

Dolomite vanity tops are made up of mineral composite and showcase elegance and sophistication. Dolomite, being the main ingredient, is composed of calcium magnesium carbonate. Rocks containing this raw material are sourced from selected certified mines in the EU and brought to you in these stunning pieces, finished with an elegant, smooth matt surface.

- ✓ Clean crisp lines for easy cleaning
- ✓ Durable and very strong
- ✓ 5 year warranty
- ✓ Heat resistant
- ✗ Surface can scratch if not treated with care
- ✗ Limited range of sizes



Laminate

Laminate is crafted where decorative paper infused with resin is securely bonded to both sides of a medium-density fiberboard (MDF) or particleboard substrate under controlled heat and pressure conditions.

- ✓ Durable
- ✓ Easy to clean and maintain
- ✓ Good stain resistance
- ✓ 5 year warranty
- ✗ Susceptible to heat damage (e.g. hair straightener)
- ✗ Potential water damage if exposed to excessive moisture



SilkSurface

SilkSurface is a high performance 20mm solid surface material. Manufactured using a special multi-process technique, these solid surfaces have a beautiful blend of colours with a realistic granite appearance.

- ✓ Non-porous, good stain resistance
- ✓ Very easy to repair if scratched
- ✓ Crack and chip resistant
- ✓ Can be drilled onsite with normal wood holesaw or jigsaw
- ✓ Silica-free
- ✓ 10 year warranty
- ✗ Susceptible to scratching

Vanity Tops



ALPHA CERAMIC
Most available with 0, 1 or 3 tap holes:
(with overflow to back)



CLASSIC MINERAL COMPOSITE
Available with 0, 1 or 3 tap holes.
(no overflow)



ENSUITE MINERAL COMPOSITE
Most available with 0, 1 or 3 tap holes[†].
(no overflow)



GRAND MINERAL COMPOSITE
Available with 0, 1 or 3 tap holes.
(no overflow)



HAVEN MATT DOLOMITE
Available with 0, 1 or 3 tap holes.
(with overflow to back)



LIBERTY CERAMIC
Available with 1 tap hole.
(overflow to side)



NANO DOLOMITE
Available with 1 tap hole.
(overflow to side)



OPAL MINERAL COMPOSITE
Available with 1 tap hole.
(no overflow)



REGAL MINERAL COMPOSITE
Available with 0, 1 or 3 tap holes.
(no overflow)



STADIUM MINERAL COMPOSITE
Available with 0, 1 or 3 tap holes.
(no overflow)



URBAN CERAMIC
Available with 1 or 3 tap holes.
(overflow to back)



FREEDOM SILKSURFACE*
Available with 0, 1 or 3 tap holes.
(60mm Top)



BAILEY SILKSURFACE†
Available with 0, 1 or 3 tap holes.
(140mm Top)



BOX SILKSURFACE*
Available with 0, 1 or 3 tap holes.
(200mm Top)

NOTE: Due to the manufacturing process ceramic tops can vary from their nominal stated sizes. Use the dimensions provided as a guide only. Due to this ceramic tops are not recommended for wall to wall installations. [†]Excluding 1200mm Double which comes with 0 Tap holes. ^{**}Excluding 460mm which comes with 0 Tap holes. *Shown with Rectangle under counter basin. Available with above or under counter basin/s) [†]Exclusive to Milan Vanities.

Vanity Tops

TOP STYLE

Alpha (Ceramic)		
TOP SIZE (mm)	SKU	RRP
600 x 460	APH-TP-600-C	\$624
750 x 460	APH-TP-750-C	\$646
900 x 460	APH-TP-900-C	\$679
1200 x 460 Single	APH-TP-1200-C	\$867
1200 x 460 Double	APH-TP-1200-D	\$1,372
1500 x 460 Single	APH-TP-1500-C	\$1,431
1500 x 460 Double	APH-TP-1500-D	\$1,683

Liberty (Ceramic)		
TOP SIZE (mm)	SKU	RRP
480 x 240 Left-hand Offset	LIB-TP-480-L	\$239
480 x 240 Right-hand Offset	LIB-TP-480-R	\$239

Urban (Ceramic)		
TOP SIZE (mm)	SKU	RRP
600 x 360	URB-TP-600-C	\$624
800 x 360	URB-TP-800-C	\$679
1000 x 360	URB-TP-1000-C	\$867

Classic (Mineral Composite)		
TOP SIZE (mm)	SKU	RRP
600 x 460	CLA-TP-600-C	\$520
750 x 460	CLA-TP-750-C	\$539
900 x 460	CLA-TP-900-C	\$556
1050 x 460	CLA-TP-1050-C	\$689
1200 x 460	CLA-TP-1200-C	\$697
1500 x 460 Single	CLA-TP-1500-C	\$1,209
1500 x 460 Double	CLA-TP-1500-D	\$1,437
1800 x 460 Single	CLA-TP-1800-C	\$1,539
1800 x 460 Double	CLA-TP-1800-D	\$1,740
2100 x 460 Single	CLA-TP-2100-C	\$2,427
2100 x 460 Double	CLA-TP-2100-D	\$2,684

Ensuite (Mineral Composite)		
TOP SIZE (mm)	SKU	RRP
460 x 240 Left-hand Offset	ENS-TP-460-L	\$397
460 x 240 Right-hand Offset	ENS-TP-460-R	\$397
600 x 340	ENS-TP-600-C	\$565
750 x 340	ENS-TP-750-C	\$579

Grand (Mineral Composite)		
TOP SIZE (mm)	SKU	RRP
600 x 460	GND-TP-600-C	\$804
750 x 460	GND-TP-750-C	\$857
900 x 460	GND-TP-900-C	\$891
1050 x 460	GND-TP-1050-C	\$1,024
1200 x 460	GND-TP-1200-C	\$1,073
1500 x 460 Single	GND-TP-1500-C	\$1,568
1500 x 460 Double	GND-TP-1500-D	\$1,884
1800 x 460 Single	GND-TP-1800-C	\$2,014
1800 x 460 Double	GND-TP-1800-D	\$2,297

TOP STYLE

Opal (Mineral Composite)		
TOP SIZE (mm)	SKU	RRP
460 x 240 Left-hand Offset	OPA-TP-460-L	\$320
460 x 240 Right-hand Offset	OPA-TP-460-R	\$320

Regal (Mineral Composite)		
TOP SIZE (mm)	SKU	RRP
600 x 460	REG-TP-600-C	\$624
750 x 460	REG-TP-750-C	\$646
900 x 460	REG-TP-900-C	\$679
900 x 460 Left-hand Offset	REG-TP-900-L	\$679
900 x 460 Right-hand Offset	REG-TP-900-R	\$679
1050 x 460	REG-TP-1050-C	\$781
1200 x 460	REG-TP-1200-C	\$867
1200 x 460 Left-hand Offset	REG-TP-1200-L	\$867
1200 x 460 Right-hand Offset	REG-TP-1200-R	\$867
1500 x 460 Single	REG-TP-1500-C	\$1,312
1500 x 460 Double	REG-TP-1500-D	\$1,563
1800 x 460 Single	REG-TP-1800-C	\$1,675
1800 x 460 Double	REG-TP-1800-D	\$1,899
2100 x 460 Single	REG-TP-2100-C	\$2,655
2100 x 460 Double	REG-TP-2100-D	\$2,934

Stadium (Mineral Composite)		
TOP SIZE (mm)	SKU	RRP
600 x 460	STD-TP-600-C	\$624
750 x 460	STD-TP-750-C	\$646
900 x 460	STD-TP-900-C	\$679
1050 x 460	STD-TP-1050-C	\$781
1200 x 460	STD-TP-1200-C	\$867
1500 x 460 Single	STD-TP-1500-C	\$1,312
1500 x 460 Double	STD-TP-1500-D	\$1,563
1800 x 460 Single	STD-TP-1800-C	\$1,675
1800 x 460 Double	STD-TP-1800-D	\$1,899
2100 x 460 Single	STD-TP-2100-C	\$2,655
2100 x 460 Double	STD-TP-2100-D	\$2,934

Haven Matt (Dolomite)		
TOP SIZE (mm)	SKU	RRP
750 x 460	HVN-TP-750-C	\$646
900 x 460	HVN-TP-900-C	\$679
1200 x 460	HVN-TP-1200-C	\$867
1500 x 460 Single	HVN-TP-1500-C	\$1,312
1500 x 460 Double	HVN-TP-1500-D	\$1,563

Nano (Dolomite)		
TOP SIZE (mm)	SKU	RRP
400 x 220 Left-hand Offset	NAN-TP-400-L	\$410
400 x 220 Right-hand Offset	NAN-TP-400-R	\$410
550 x 220 Left-hand Offset	NAN-TP-550-L	\$446
550 x 220 Right-hand Offset	NAN-TP-550-R	\$446
800 x 220 Left-hand Offset	NAN-TP-800-L	\$493
800 x 220 Right-hand Offset	NAN-TP-800-R	\$493

Slab Tops + Upgrades

SLAB TOPS

20mm SilkSurface Slab Tops		
	SKU	RRP
600 x 20 x 460 Single Bowl	SSA-ST-600-20-460-C	\$738
750 x 20 x 460 Single Bowl	SSA-ST-750-20-460-C	\$805
900 x 20 x 460 Single Bowl	SSA-ST-900-20-460-C	\$1,149
1050 x 20 x 460 Single Bowl	SSA-ST-1050-20-460-C	\$1,218
1200 x 20 x 460 Single Bowl	SSA-ST-1200-20-460-C	\$1,237
1500 x 20 x 460 Single Bowl	SSA-ST-1500-20-460-C	\$1,695
1500 x 20 x 460 Double Bowl	SSA-ST-1500-20-460-D	\$1,695
1800 x 20 x 460 Single Bowl	SSA-ST-1800-20-460-C	\$1,798
1800 x 20 x 460 Double Bowl	SSA-ST-1800-20-460-D	\$1,798
2100 x 20 x 460 Single Bowl	SSA-ST-2100-20-460-C	\$1,901
2100 x 20 x 460 Double Bowl	SSA-ST-2100-20-460-D	\$1,901

60mm SilkSurface Freedom Tops		
	SKU	RRP
600 x 60 x 460 Single Bowl	FRA-ST-600-60-460-C	\$886
750 x 60 x 460 Single Bowl	FRA-ST-750-60-460-C	\$966
900 x 60 x 460 Single Bowl	FRA-ST-900-60-460-C	\$1,380
1050 x 60 x 460 Single Bowl	FRA-ST-1050-60-460-C	\$1,431
1200 x 60 x 460 Single Bowl	FRA-ST-1200-60-460-C	\$1,483
1500 x 60 x 460 Single Bowl	FRA-ST-1500-60-460-C	\$2,156
1500 x 60 x 460 Double Bowl	FRA-ST-1500-60-460-D	\$2,156
1800 x 60 x 460 Single Bowl	FRA-ST-1800-60-460-C	\$2,320
1800 x 60 x 460 Double Bowl	FRA-ST-1800-60-460-D	\$2,320
2100 x 60 x 460 Single Bowl	FRA-ST-2100-60-460-C	\$2,484
2100 x 60 x 460 Double Bowl	FRA-ST-2100-60-460-D	\$2,484

SLAB TOP UPGRADES

Upgrade from 20mm SilkSurface to 60mm Freedom Top		
	SKU	RRP
600 x 460mm - Upgrade to Freedom Top	SS-OPT-600-FR-60	\$148
750 x 460mm - Upgrade to Freedom Top	SS-OPT-750-FR-60	\$164
900 x 460mm - Upgrade to Freedom Top	SS-OPT-900-FR-60	\$233
1050 x 460mm - Upgrade to Freedom Top	SS-OPT-1050-FR-60	\$241
1200 x 460mm - Upgrade to Freedom Top	SS-OPT-1200-FR-60	\$252
1500 x 460mm - Upgrade to Freedom Top	SS-OPT-1500-FR-60	\$447
1800 x 460mm - Upgrade to Freedom Top	SS-OPT-1800-FR-60	\$507
2100 x 460mm - Upgrade to Freedom Top	SS-OPT-2100-FR-60	\$592

Upgrade from 20mm Silksurface to 200mm Box Top		
	SKU	RRP
600 x 460mm Upgrade to Box Top	SS-OPT-600-BX-200	\$373
750 x 460mm Upgrade to Box Top	SS-OPT-750-BX-200	\$407
900 x 460mm Upgrade to Box Top	SS-OPT-900-BX-200	\$579
1050 x 460mm Upgrade to Box Top	SS-OPT-1050-BX-200	\$605
1200 x 460mm Upgrade to Box Top	SS-OPT-1200-BX-200	\$625
1500 x 460mm Upgrade to Box Top	SS-OPT-1500-BX-200	\$855
1800 x 460mm Upgrade to Box Top	SS-OPT-1800-BX-200	\$907
2100 x 460mm Upgrade to Box Top	SS-OPT-2100-BX-200	\$976

SLAB TOPS

200mm SilkSurface Box Tops		
	SKU	RRP
600 x 200 x 460 Single Bowl	BXA-ST-600-200-460-C	\$1,107
750 x 200 x 460 Single Bowl	BXA-ST-750-200-460-C	\$1,207
900 x 200 x 460 Single Bowl	BXA-ST-900-200-460-C	\$1,724
1050 x 200 x 460 Single Bowl	BXA-ST-1050-200-460-C	\$1,855
1200 x 200 x 460 Single Bowl	BXA-ST-1200-200-460-C	\$2,542
1500 x 200 x 460 Single Bowl	BXA-ST-1500-200-460-C	\$2,696
1500 x 200 x 460 Double Bowl	BXA-ST-1500-200-460-D	\$2,696
1800 x 200 x 460 Single Bowl	BXA-ST-1800-200-460-C	\$2,900
1800 x 200 x 460 Double Bowl	BXA-ST-1800-200-460-D	\$2,900
2100 x 200 x 460 Single Bowl	BXA-ST-2100-200-460-C	\$3,056
2100 x 200 x 460 Double Bowl	BXA-ST-2100-200-460-D	\$3,056

18mm Laminated Slab Tops		
	SKU	RRP
600 x 18 x 460 Single Bowl	LMA-ST-600-18-460-C	\$441
750 x 18 x 460 Single Bowl	LMA-ST-750-18-460-C	\$488
900 x 18 x 460 Single Bowl	LMA-ST-900-18-460-C	\$527
1200 x 18 x 460 Single Bowl	LMA-ST-1200-18-460-C	\$615
1500 x 18 x 460 Single Bowl	LMA-ST-1500-18-460-C	\$755
1500 x 18 x 460 Double Bowl	LMA-ST-1500-18-460-D	\$755
1800 x 18 x 460 Single Bowl	LMA-ST-1800-18-460-C	\$850
1800 x 18 x 460 Double Bowl	LMA-ST-1800-18-460-D	\$850
2100 x 18 x 460 Single Bowl	LMA-ST-2100-18-460-C	\$961
2100 x 18 x 460 Double Bowl	LMA-ST-2100-18-460-C	\$961

SLAB TOP UPGRADES

If you're purchasing a vanity that includes a slab top and basin		
	SKU	RRP
Choose any White Gloss (WG) Ceramic basin		No Cost
Upgrade to a White Matt, Black Matt or Coloured Ceramic Basin, or Mineral Composite Basin (per basin)	UPG-OPT-BASCOLOUR	\$152
Upgrade to a Stainless Steel Basin (per basin)	UPG-OPT-STAINLESS	\$374
Supplying your own counter basin? Reduce price by \$130 per basin. NOTE: Basin specifications are required for cutouts		

Cutouts in Slab Tops		
	SKU	RRP
Cutout to suit Under Counter basins NOTE: Laminate tops not available for Under Counter basins	ST-OPT-UMCHARGE	\$300

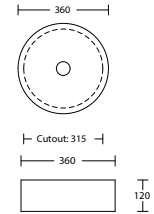
DID YOU KNOW?
You can purchase a basin on its own
(See page 250 for part numbers)

Ceramic Under Counter Basins

Allure Under Counter

No overflow. Only available with SilkSurface slab top (cannot be purchased on their own). Offset or wall mounted tapware required.

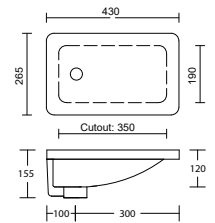
- WG** ALLU-BS-360-WG-S | \$233 **GM** ALLU-BS-360-GM-U | \$385
- WM** ALLU-BS-360-WM-U | \$385 **LGM** ALLU-BS-360-LGM-U | \$385
- BKM** ALLU-BS-360-BKM-U | \$385 **PM** ALLU-BS-360-PM-U | \$385
- ANT** ALLU-BS-360-ANT-U | \$385



Mini Rectangle Under Counter White*

With overflow to side.

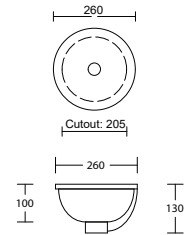
- WG** MRE-BS-425-WG-S | \$233



Mini Round Under Counter White*

With overflow to front.

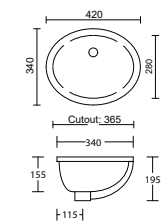
- WG** MRO-BS-255-WG-S | \$233



Oval Under Counter White

With overflow to front.

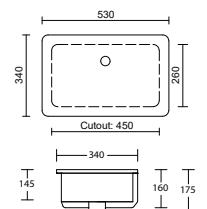
- WG** OVL-BS-420-WG-S | \$233



Rectangle Under Counter White

With overflow to back.

- WG** REC-BS-530-WG-S | \$233



NOTE: Wastes not included for Ceramic and Mineral Composite basins. Ceramic and Stainless Steel wastes available as separate purchase. White gloss ceramic basins (-S) included in package price. Mineral Composite, Stainless Steel, matt and coloured basins (-U) will incur an additional charge. While the colours in this brochure are to the highest standard in printing, it should only be used as an indication of actual product design. *Suitable for small space vanities.

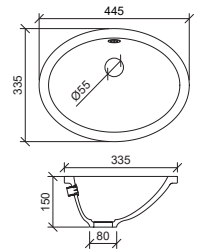


Mineral Composite Under Counter Basins

Amara Under Counter White

With overflow to back.

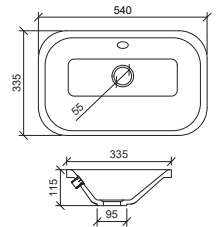
WG AMA-BS-450-WG-U | \$385



Bodhi Under Counter White

With overflow to back.

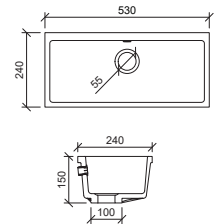
WG BOD-BS-540-WG-U | \$385



Ruby Under Counter White*

With overflow to back.

WG RUB-BS-530-WG-U | \$385



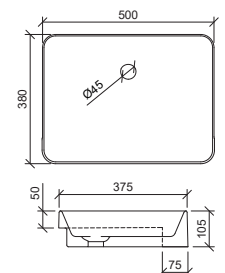
Mineral Composite Semi-Recessed Basins



Fergus Semi-Recessed White*

Only available on the Bargo, Milan, and 200mm Box Tops.

WG FER-BS-500-WG-U | \$385



NOTE: Wastes not included for Ceramic and Mineral Composite basins. Ceramic and Stainless Steel wastes available as separate purchase. White gloss ceramic basins (-S) included in package price. Mineral Composite, Stainless Steel, matt and coloured basins (-U) will incur an additional charge. While the colours in this brochure are to the highest standard in printing, it should only be used as an indication of actual product design. *Suitable for small space vanities.

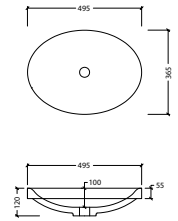
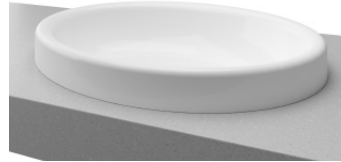


Mineral Composite Basins

Coast Inset White

Offset or wall mounted tapware required

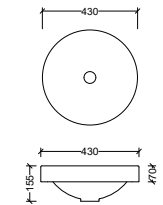
WG COA-BS-495-WG-U | \$385



Corrida Inset White

Offset or wall mounted tapware required

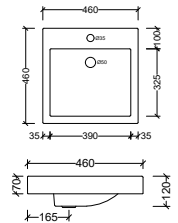
WG COR-BS-430-WG-U | \$385



Cove Grand Inset White

With tap landing

WG COV-BS-460-WG-U | \$385



If you are purchasing a vanity that includes a slab top and ceramic basin	SKU	RRP
Choose any White Gloss (WG) Ceramic basin		Included in Package Price
Upgrade to a White Matt, Black Matt or Coloured Ceramic basin, or Mineral Composite basin (per basin)	UPG-OPT-BASCOLOUR	\$152
Upgrade to a Stainless Steel Basin (per basin)	UPG-OPT-STAINLESS	\$374
Supplying your own counter basin? Reduce price by \$130 per basin		

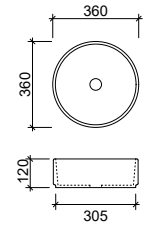
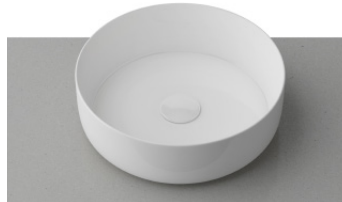
WG - White Gloss | **WM** - White Matt | **BKM** - Black Matt | **ANT** - Anthracite | **GM** - Grey Matt | **LGM** - Light Grey Matt | **PM** - Pink Matt | **BG** - Brushed Gold | **BN** - Brushed Nickel

Ceramic Basins

Allure White

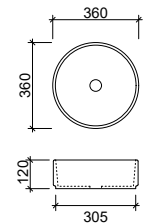
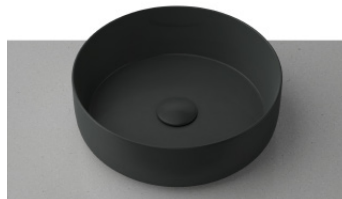
WG ALL-BS-360-WG-S | \$233

WM ALL-BS-360-WM-U | \$385



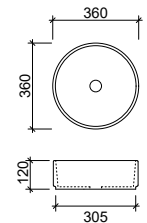
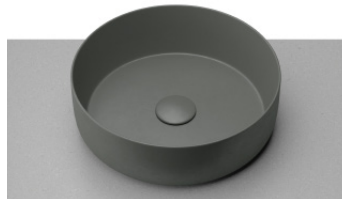
Allure Black

BKM ALL-BS-360-BKM-U | \$385



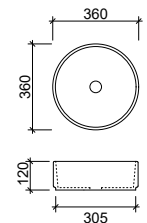
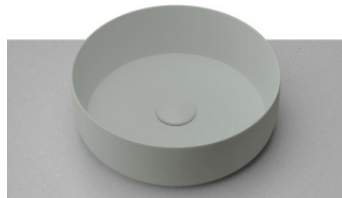
Allure Anthracite

ANT ALL-BS-360-ANT-U | \$385



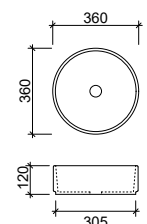
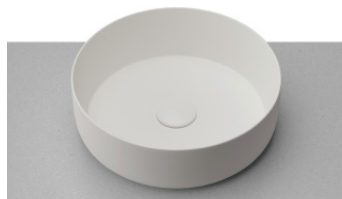
Allure Grey

GM ALL-BS-360-GM-U | \$385



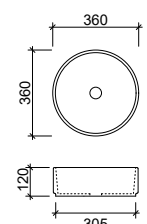
Allure Light Grey

LGM ALL-BS-360-LGM-U | \$385



Allure Pink

PM ALL-BS-360-PM-U | \$385

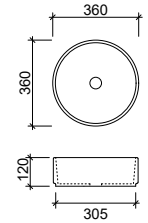


NOTE: Wastes not included for Ceramic and Mineral Composite basins. Ceramic and Stainless Steel wastes available as separate purchase. White gloss ceramic basins (-S) included in package price. Mineral Composite, Stainless Steel, matt and coloured basins (-U) will incur an additional charge. While the colours in this brochure are to the highest standard in printing, it should only be used as an indication of actual product design. *Suitable for small space vanities.

Allure Arrow White

WG ALA-BS-360-WG-S | \$233

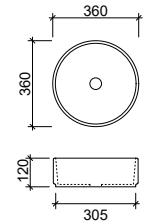
WM ALA-BS-360-WM-U | \$385



Allure Dimple White

WG ALD-BS-360-WG-S | \$233

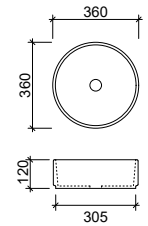
WM ALD-BS-360-WM-U | \$385



Allure Flute White

WG ALF-BS-365-WG-S | \$233

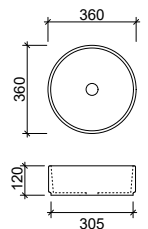
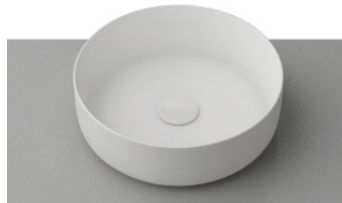
WM ALF-BS-365-WM-U | \$385



Allure Raked White

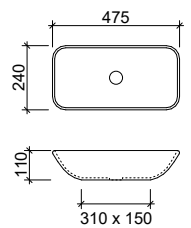
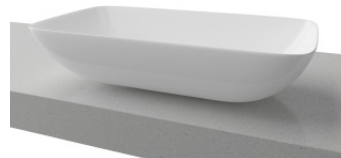
WG ALR-BS-360-WG-S | \$233

WM ALR-BS-360-WM-U | \$385



Bloom White*

WG BLO-BS-475-WG-S | \$233

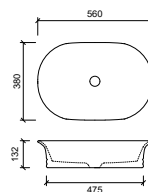
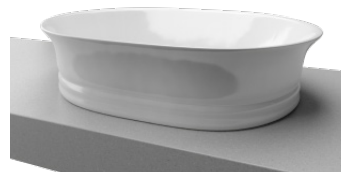


Bonnie White

Offset or wall mounted tapware required

WG BON-BS-560-WG-S | \$233

WM BON-BS-560-WM-U | \$385

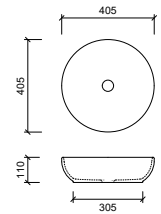


Chase White

Offset or wall mounted tapware required

WG CHA-BS-400-WG-S | \$233

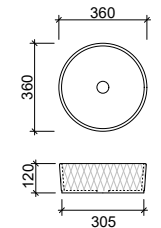
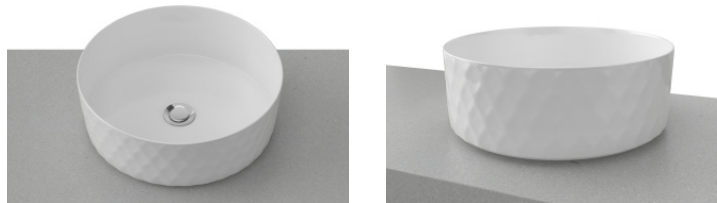
WM CHA-BS-400-WM-U | \$385



Diamond White

WG DIA-BS-360-WG-S | \$233

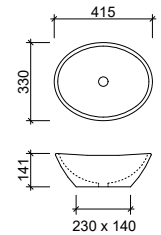
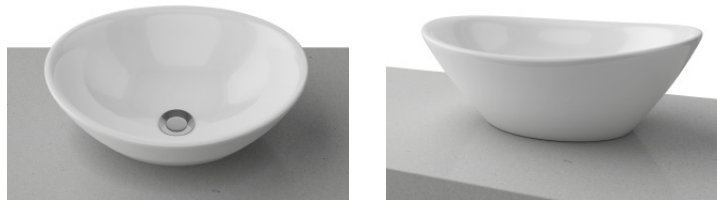
WM DIA-BS-360-WM-U | \$385



Elite White*

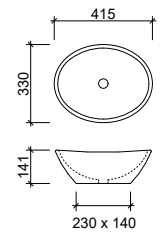
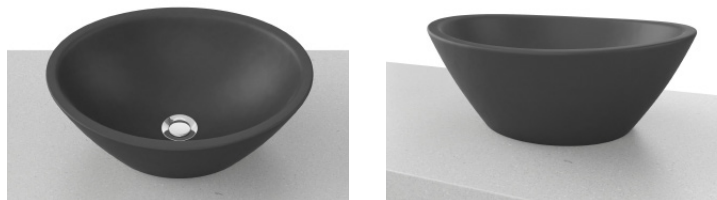
WG ELI-BS-415-WG-S | \$233

WM ELI-BS-415-WM-U | \$385



Elite Black*

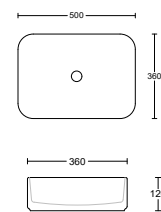
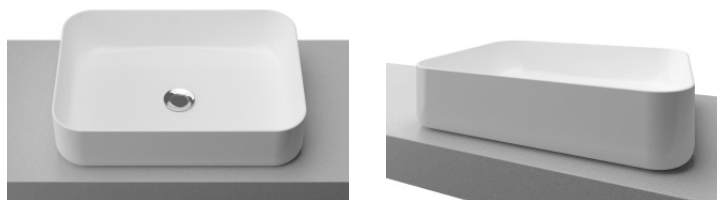
BKM ELI-BS-415-BKM-U | \$385



Enchant White

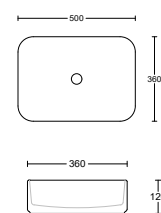
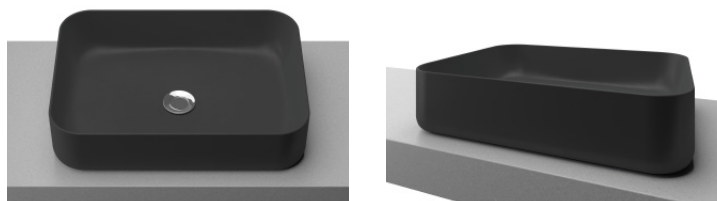
WG ENC-BS-500-WG-S | \$233

WM ENC-BS-500-WM-U | \$385



Enchant Black

BKM ENC-BS-500-BKM-U | \$385

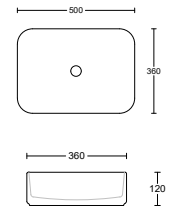
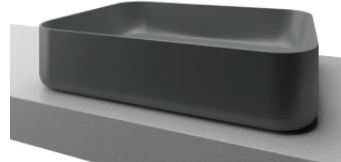


NOTE: Wastes not included for Ceramic and Mineral Composite basins. Ceramic and Stainless Steel wastes available as separate purchase. White gloss ceramic basins (-S) included in package price. Mineral Composite, Stainless Steel, matt and coloured basins (-U) will incur an additional charge. While the colours in this brochure are to the highest standard in printing, it should only be used as an indication of actual product design. *Suitable for small space vanities.

Enchant Grey

Anthracite Waste required

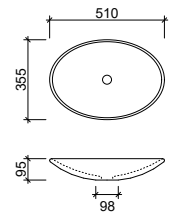
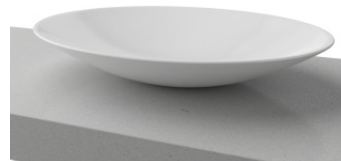
GM ENC-BS-500-GM-U | \$385



Feather White

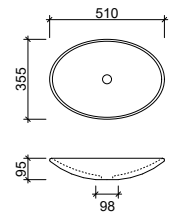
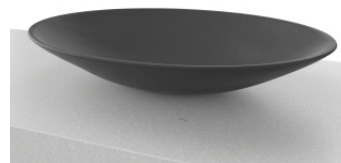
WG FEA-BS-500-WG-S | \$233

WM FEA-BS-500-WM-U | \$385



Feather Black

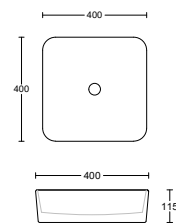
BKM FEA-BS-500-BKM-U | \$385



Florent White

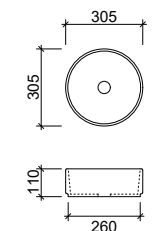
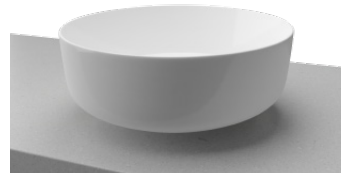
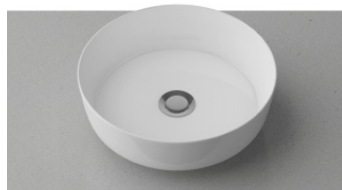
Offset or wall mounted tapware required

WG FLO-BS-400-WG-S | \$233



Gem White*

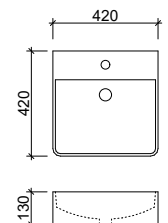
WG GEM-BS-305-WG-S | \$233



Iconic 420 White

With overflow and tap landing

WG ICN-BS-420-WG-S | \$233

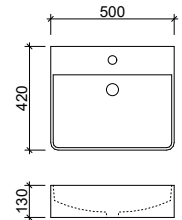


WG - White Gloss | WM - White Matt | BKM - Black Matt | ANT - Anthracite | GM - Grey Matt | LGM - Light Grey Matt | PM - Pink Matt |
BG - Brushed Gold | BN - Brushed Nickel

Iconic 500 White

With overflow and tap landing

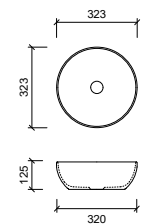
WG ICN-BS-500-WG-S | \$233



Jessie White*

WG JES-BS-320-WG-S | \$233

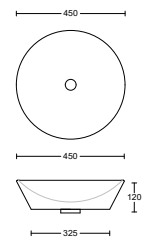
WM JES-BS-320-WM-U | \$385



Jupiter White

Offset or wall mounted tapware required

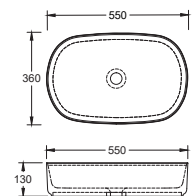
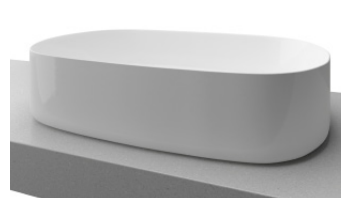
WG JUP-BS-450-WG-S | \$233



Myrtle White

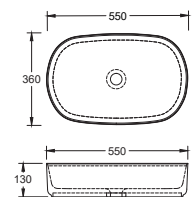
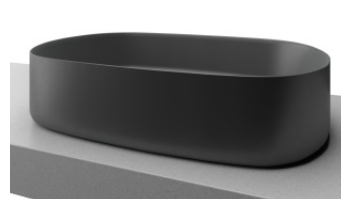
WG MYR-BS-550-WG-S | \$233

WM MYR-BS-550-WM-U | \$385



Myrtle Black

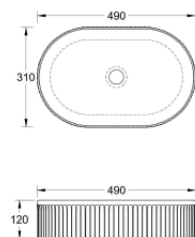
BKM MYR-BS-550-BKM-U | \$385



Oval Flute White

WG OVF-BS-490-WG-S | \$233

WM OVF-BS-490-WM-U | \$385

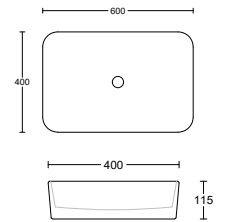


NOTE: Wastes not included for Ceramic and Mineral Composite basins. Ceramic and Stainless Steel wastes available as separate purchase. White gloss ceramic basins (-S) included in package price. Mineral Composite, Stainless Steel, matt and coloured basins (-U) will incur an additional charge. While the colours in this brochure are to the highest standard in printing, it should only be used as an indication of actual product design. *Suitable for small space vanities.

Quill White

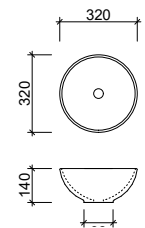
Offset or wall mounted tapware required

WG QUI-BS-600-WG-S | \$233



Rose White*

WG ROS-BS-320-WG-S | \$233

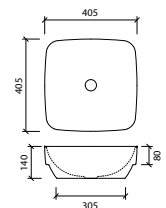
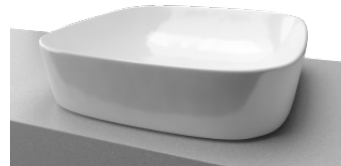


Addison Inset White

Offset or wall mounted tapware required

WG ADD-BS-400-WG-S | \$233

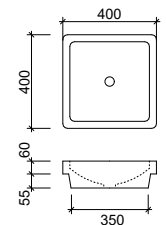
WM ADD-BS-400-WM-U | \$385



Arcade Inset White

Offset or wall mounted tapware required

WG ARC-BS-400-WG-S | \$233

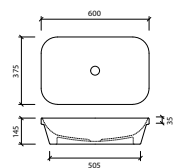
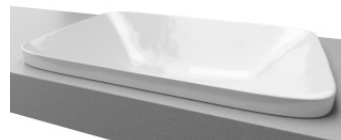


George Inset White

Offset or wall mounted tapware required

WG GEO-BS-600-WG-S | \$233

WM GEO-BS-600-WM-U | \$385

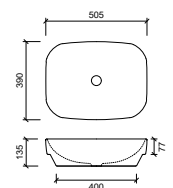
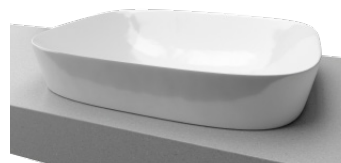


Lorenzo Inset White

Offset or wall mounted tapware required

WG LOR-BS-500-WG-S | \$233

WM LOR-BS-500-WM-U | \$385



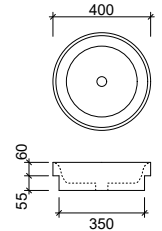
WG - White Gloss | **WM** - White Matt | **BKM** - Black Matt | **ANT** - Anthracite | **GM** - Grey Matt | **LGM** - Light Grey Matt | **PM** - Pink Matt | **BG** - Brushed Gold | **BN** - Brushed Nickel

Radius Inset White

Offset or wall mounted tapware required

WG RAD-BS-400-WG-S | \$233

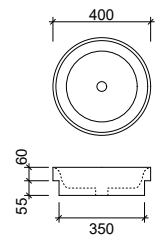
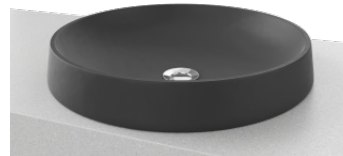
WM RAD-BS-400-WM-U | \$385



Radius Inset Black

Offset or wall mounted tapware required

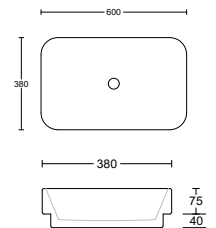
BKM RAD-BS-400-BKM-U | \$385



Rome Inset White

Offset or wall mounted tapware required

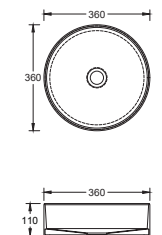
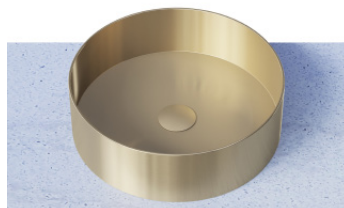
WG ROM-BS-600-WG-S | \$233



Stainless Steel Basins

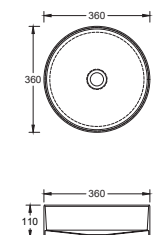
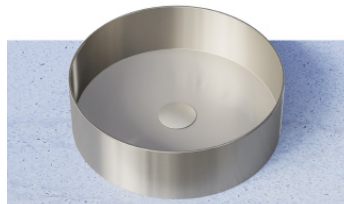
Luxe Brushed Gold

BG LUX-BS-360-BG-U | \$665
(Including waste)



Luxe Brushed Nickel

BN LUX-BS-360-BN-U | \$665



NOTE: Wastes not included for Ceramic and Mineral Composite basins. Ceramic and Stainless Steel wastes available as separate purchase. White gloss ceramic basins (-S) included in package price. Mineral Composite, Stainless Steel, matt and coloured basins (-U) will incur an additional charge. While the colours in this brochure are to the highest standard in printing, it should only be used as an indication of actual product design. *Suitable for small space vanities.

Ceramic Wastes

White

WG POP-OPT-WG | \$59

WM POP-OPT-WM | \$59



Grey

GM POP-OPT-DGM | \$59



Black

BKM POP-OPT-BLK | \$59



Light Grey

LGM POP-OPT-LGM | \$59



Anthracite

ANT POP-OPT-ANT | \$59



Pink

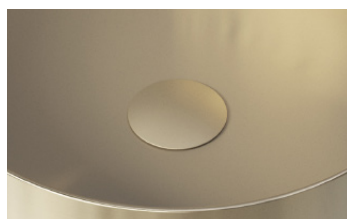
PM POP-OPT-PM | \$59



Stainless Steel Wastes

Brushed Gold

BG POP-OPT-BG | \$80



Brushed Nickel

BN POP-OPT-BN | \$80







WG - White Gloss | **WM** - White Matt | **BKM** - Black Matt | **ANT** - Anthracite | **GM** - Grey Matt | **LGM** - Light Grey Matt | **PM** - Pink Matt |
BG - Brushed Gold | **BN** - Brushed Nickel

NOTE: Wastes only suit our above counter and inset basins with no overflows. While the colours in this brochure are to the highest standard in printing, it should only be used as an indication of actual product design.



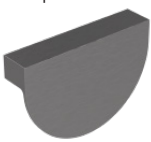


Cabinet Handles

What a selection! We've got them all! Customise your cabinet with any of these stunning handle options at no extra cost! Need matching handles for your laundry or kitchen project? Our handles are also available to purchase separately.





Arch Handle

											
Chrome			Brushed Nickel			Black			Satin Gold		
SKU	RRP		SKU	RRP		SKU	RRP		SKU	RRP	
244mm	ARC-H-244-CR	\$42	244mm	ARC-H-244-BN	\$42	244mm	ARC-H-244-BL	\$42	244mm	ARC-H-244-SG	\$42
340mm	ARC-H-340-CR	\$42	340mm	ARC-H-340-BN	\$42	340mm	ARC-H-340-BL	\$42	340mm	ARC-H-340-SG	\$42


Crescent Handle* Attaches in the standard position towards top of door and drawer fronts.

														
Chrome			Brushed Nickel			Gunmetal			Black			Brushed Gold		
SKU	RRP		SKU	RRP		SKU	RRP		SKU	RRP		SKU	RRP	
96mm	CRE-H-96-CR	\$42	96mm	CRE-H-96-BN	\$42	96mm	CRE-H-96-GM	\$42	96mm	CRE-H-96-BL	\$42	96mm	CRE-H-96-BG	\$42

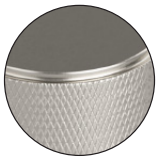
Curve Handle

											
Chrome			Brushed Nickel			Black			Brushed Gold		
SKU	RRP		SKU	RRP		SKU	RRP		SKU	RRP	
198mm	CUR-H-198-CR	\$42	198mm	CUR-H-198-BN	\$42	198mm	CUR-H-198-BL	\$42	198mm	CUR-H-198-SG	\$42
359mm	CUR-H-359-CR	\$42	359mm	CUR-H-359-BN	\$42	359mm	CUR-H-359-BL	\$42	359mm	CUR-H-359-SG	\$42

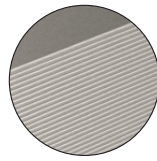
D Handle

											
Chrome			Brushed Nickel			Black			Satin Gold		
SKU	RRP		SKU	RRP		SKU	RRP		SKU	RRP	
104mm*	DHA-H-104-CR	\$42	104mm*	DHA-H-104-BN	\$42	104mm*	DHA-H-104-BL	\$42	104mm*	DHA-H-104-SG	\$42
138mm*	DHA-H-138-CR	\$42	138mm*	DHA-H-138-BN	\$42	138mm*	DHA-H-138-BL	\$42	138mm*	DHA-H-138-SG	\$42
230mm	DHA-H-230-CR	\$42	230mm	DHA-H-230-BN	\$42	230mm	DHA-H-230-BL	\$42	230mm	DHA-H-230-SG	\$42
361mm	DHA-H-361-CR	\$42	361mm	DHA-H-361-BN	\$42	361mm	DHA-H-361-BL	\$42	361mm	DHA-H-361-SG	\$42
457mm	DHA-H-457-CR	\$42	457mm	DHA-H-457-BN	\$42	457mm	CUR-H-457-BL	\$42	457mm	DHA-H-457-SG	\$42

*Denotes handles suitable for shaker fronts.



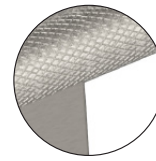
◀ Duke detail



◀ Eclipse detail



◀ Knurled Bar detail



◀ Lord & Monarch detail

Disc Handle

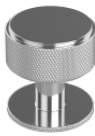


Full		
	SKU	RRP
100mm	DSC-H-100-PN	\$42
200mm	DSC-H-200-PN	\$42

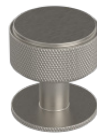
Half		
	SKU	RRP
200mm	DSCH-H-200-PN	\$42

Notes for Disc Handles:
200mm able to be split across two drawers or doors. Please note the configuration when ordering. Available in any paint colour from page 274.

Duke Knob*



Chrome		
	SKU	RRP
35mm	DUK-H-35-BN	\$42



Brushed Nickel		
	SKU	RRP
35mm	DUK-H-35-BN	\$42



Gunmetal		
	SKU	RRP
35mm	DUK-H-35-GM	\$42



Black		
	SKU	RRP
35mm	DUK-H-35-BL	\$42



Satin Gold		
	SKU	RRP
35mm	DUK-H-35-BG	\$42

Duke T Bar*



Chrome		
	SKU	RRP
80mm	DUK-H-80-CR	\$42



Brushed Nickel		
	SKU	RRP
80mm	DUK-H-80-BN	\$42



Gunmetal		
	SKU	RRP
80mm	DUK-H-80-GM	\$42



Black		
	SKU	RRP
80mm	DUK-H-80-BL	\$42



Satin Gold		
	SKU	RRP
80mm	DUK-H-80-BG	\$42

Duke Handle



Chrome		
	SKU	RRP
200mm	DUK-H-200-CR	\$42
400mm	DUK-H-400-CR	\$42



Brushed Nickel		
	SKU	RRP
200mm	DUK-H-200-BN	\$42
400mm	DUK-H-400-BN	\$42



Gunmetal		
	SKU	RRP
200mm	DUK-H-200-GM	\$42
400mm	DUK-H-400-GM	\$42



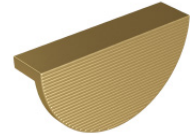
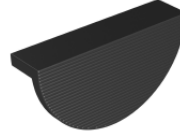
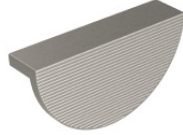
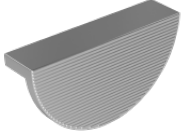
Black		
	SKU	RRP
200mm	DUK-H-200-BL	\$42
400mm	DUK-H-400-BL	\$42



Satin Gold		
	SKU	RRP
200mm	DUK-H-200-BG	\$42
400mm	DUK-H-400-BG	\$42

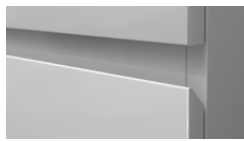
*Denotes handles suitable for shaker fronts.

Eclipse Handle* Attaches in the standard position towards top of door and drawer fronts.



Chrome			Brushed Nickel			Black			Satin Gold		
	SKU	RRP		SKU	RRP		SKU	RRP		SKU	RRP
110mm	ECL-H-110-CR	\$42	110mm	ECL-H-110-BN	\$42	110mm	ECL-H-110-BL	\$42	110mm	ECL-H-110-SG	\$42

Fingerpull*



Woodgrain			Painted		
	SKU	RRP		SKU	RRP
N/A	FPH-H	N/A	N/A	FPH-H	N/A

Notes for Fingerpull Option:
Usable drawer height is reduced with fingerpull. Drawer and door widths might vary depending on cabinet layout. Available in all colours.

Flat Knob*



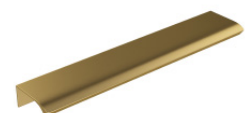
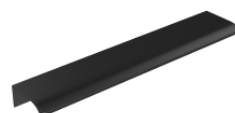
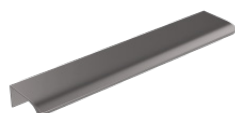
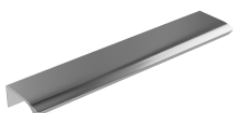
Chrome			Brushed Nickel			Black			Matt Gold		
	SKU	RRP		SKU	RRP		SKU	RRP		SKU	RRP
26mm	FLA-H-26-CR	\$42	26mm	FLA-H-26-BN	\$42	26mm	FLA-H-26-BL	\$42	26mm	FLA-H-26-SG	\$42

Knurled Bar Handle



Chrome			Brushed Nickel			Gunmetal			Black			Satin Gold		
	SKU	RRP		SKU	RRP		SKU	RRP		SKU	RRP		SKU	RRP
106mm*	KNB-H-106-CR	\$42	106mm*	KNB-H-106-BN	\$42	106mm*	KNB-H-106-GM	\$42	106mm*	KNB-H-106-BL	\$42	106mm*	KNB-H-106-BG	\$42
202mm	KNB-H-202-CR	\$42	202mm	KNB-H-202-BN	\$42	202mm	KNB-H-202-GM	\$42	202mm	KNB-H-202-BL	\$42	202mm	KNB-H-202-BG	\$42
330mm	KNB-H-330-CR	\$42	330mm	KNB-H-330-BN	\$42	330mm	KNB-H-330-GM	\$42	330mm	KNB-H-330-BL	\$42	330mm	KNB-H-330-BG	\$42

Loft Handle* Attaches on the top of door and drawer fronts.



Chrome			Brushed Nickel			Gunmetal			Black			Brushed Gold		
	SKU	RRP		SKU	RRP		SKU	RRP		SKU	RRP		SKU	RRP
200mm	LOF-H-200-CR	\$42	200mm	LOF-H-200-BN	\$42	200mm	LOF-H-200-GM	\$42	200mm	LOF-H-200-BL	\$42	200mm	LOF-H-200-BG	\$42
350mm	LOF-H-350-CR	\$42	350mm	LOF-H-350-BN	\$42	350mm	LOF-H-350-GM	\$42	350mm	LOF-H-350-BL	\$42	350mm	LOF-H-350-BG	\$42

*Denotes handles suitable for shaker fronts.

Lord Handle



Chrome		
SKU		RRP
120mm*	LRD-H-120-CR	\$42
215mm	LRD-H-215-CR	\$42
310mm	LRD-H-310-CR	\$42
410mm	LRD-H-410-CR	\$42

Brushed Nickel		
SKU		RRP
120mm*	LRD-H-120-BN	\$42
215mm	LRD-H-215-BN	\$42
310mm	LRD-H-310-BN	\$42
410mm	LRD-H-410-BN	\$42

Gunmetal		
SKU		RRP
120mm*	LRD-H-120-GM	\$42
215mm	LRD-H-215-GM	\$42
310mm	LRD-H-310-GM	\$42
410mm	LRD-H-410-GM	\$42

Black		
SKU		RRP
120mm*	LRD-H-120-BL	\$42
215mm	LRD-H-215-BL	\$42
310mm	LRD-H-310-BL	\$42
410mm	LRD-H-410-BL	\$42

Brushed Gold		
SKU		RRP
120mm*	LRD-H-120-BG	\$42
215mm	LRD-H-215-BG	\$42
310mm	LRD-H-310-BG	\$42
410mm	LRD-H-410-BG	\$42

Monarch Handle



Chrome		
SKU		RRP
150mm*	MON-H-150-CR	\$42
240mm	MON-H-240-CR	\$42
340mm	MON-H-340-CR	\$42
435mm	MON-H-435-CR	\$42

Brushed Nickel		
SKU		RRP
150mm*	MON-H-150-BN	\$42
240mm	MON-H-240-BN	\$42
340mm	MON-H-340-BN	\$42
435mm	MON-H-435-BN	\$42

Gunmetal		
SKU		RRP
150mm*	MON-H-150-GM	\$42
240mm	LRD-H-215-GM	\$42
340mm	LRD-H-310-GM	\$42
435mm	LRD-H-410-GM	\$42

Black		
SKU		RRP
150mm*	MON-H-150-BL	\$42
240mm	MON-H-240-BL	\$42
340mm	MON-H-340-BL	\$42
435mm	MON-H-435-BL	\$42

Brushed Gold		
SKU		RRP
150mm*	MON-H-150-BG	\$42
240mm	MON-H-240-BG	\$42
340mm	MON-H-340-BG	\$42
435mm	MON-H-435-BG	\$42

Ova Handle* Attaches on the top of door and drawer fronts.



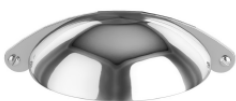
Chrome		
SKU		RRP
100mm	OVA-H-100-CR	\$42
200mm	OVA-H-200-CR	\$42
350mm	OVA-H-350-CR	\$42

Brushed Nickel		
SKU		RRP
100mm	OVA-H-100-BN	\$42
200mm	OVA-H-200-BN	\$42
350mm	OVA-H-350-BN	\$42

Black		
SKU		RRP
100mm	OVA-H-100-BL	\$42
200mm	OVA-H-200-BL	\$42
350mm	OVA-H-350-BL	\$42

Brushed Gold		
SKU		RRP
100mm	OVA-H-100-SG	\$42
200mm	OVA-H-200-SG	\$42
350mm	OVA-H-350-SG	\$42

Retro Handle*



Chrome		
SKU		RRP
105mm	RET-H-105-CR	\$42

Brushed Nickel		
SKU		RRP
105mm	RET-H-105-BN	\$42

Pewter		
SKU		RRP
105mm	RET-H-105-PW	\$42

Black		
SKU		RRP
105mm	RET-H-105-BL	\$42

Satin Gold		
SKU		RRP
105mm	RET-H-105-SG	\$42

*Denotes handles suitable for shaker fronts.

Round Knob*



Chrome		
SKU	RRP	
26mm	ROU-H-26-CR	\$42

Brushed Nickel		
SKU	RRP	
26mm	ROU-H-26-BN	\$42

Black		
SKU	RRP	
26mm	ROU-H-26-BL	\$42

Satin Gold		
SKU	RRP	
26mm	ROU-H-26-SG	\$42

Solid Lip Handle Attaches in the standard position towards top of door and drawer fronts.



Chrome		
SKU	RRP	
50mm*	LIP-H-50-CR	\$42

Brushed Nickel		
SKU	RRP	
50mm*	LIP-H-50-BN	\$42

Black		
SKU	RRP	
50mm*	LIP-H-50-BL	\$42

Satin Gold		
SKU	RRP	
50mm*	LIP-H-50-SG	\$42



Chrome		
SKU	RRP	
178mm	LIP-H-178-CR	\$42

Brushed Nickel		
SKU	RRP	
178mm	LIP-H-178-BN	\$42

Black		
SKU	RRP	
178mm	LIP-H-178-BL	\$42

Satin Gold		
SKU	RRP	
178mm	LIP-H-178-SG	\$42

Square Handle



Chrome		
SKU	RRP	
224mm	SQU-H-224-CR	\$42
352mm	SQU-H-352-CR	\$42

Brushed Nickel		
SKU	RRP	
224mm	SQU-H-224-BN	\$42
352mm	SQU-H-352-BN	\$42

Black		
SKU	RRP	
224mm	SQU-H-224-BL	\$42
352mm	SQU-H-352-BL	\$42

Satin Gold		
SKU	RRP	
224mm	SQU-H-224-SG	\$42
352mm	SQU-H-352-SG	\$42

Wave Handle* Attaches on the top of door and drawer fronts.



Chrome		
SKU	RRP	
200mm	WAV-H-200-CR	\$42
350mm	WAV-H-350-CR	\$42

Brushed Nickel		
SKU	RRP	
200mm	WAV-H-200-BN	\$42
350mm	WAV-H-350-BN	\$42

Gunmetal		
SKU	RRP	
200mm	WAV-H-200-GM	\$42
350mm	WAV-H-350-GM	\$42

Black		
SKU	RRP	
200mm	WAV-H-200-BL	\$42
350mm	WAV-H-350-BL	\$42

Brushed Gold		
SKU	RRP	
200mm	WAV-H-200-BG	\$42
350mm	WAV-H-350-BG	\$42

*Denotes handles suitable for shaker fronts.

HANDLE MOUNTING HOLE CENTRES

ARCH		ECLIPSE		OVA	
244mm	224mm Holes	110mm	96mm Holes	100mm	64mm
340mm	320mm Holes			200mm	128mm
CRESCENT		KNURLED BAR		RETRO	
96mm	64mm Holes	106mm	96mm Holes	105mm	64mm Holes
CURVE		202mm	192mm Holes	SOLID LIP	
198mm	160mm Holes	330mm	320mm Holes	50mm	32mm Holes
359mm	320mm Holes	LOFT		178mm	160mm Holes
DUKE		200mm	160mm Holes	SQUARE	
200mm	128mm Holes	350mm	256mm Holes	224mm	192mm Holes
400mm	320mm Holes	LORD		352mm	320mm Holes
D		120mm	96mm Holes	WAVE	
104mm	96mm Holes	215mm	192mm Holes	200mm	160mm Holes
138mm	128mm Holes	310mm	288mm Holes	350mm	256mm Holes
230mm	224mm Holes	410mm	384mm Holes	MONARCH	
361mm	352mm Holes	MONARCH		150mm	96mm Holes
457mm	448mm Holes	240mm	192mm Holes	240mm	192mm Holes
DISC		340mm	288mm Holes	435mm	384mm Holes
100mm	32mm Holes				
200mm	96mm Holes				



Cabinet Legs

If your chosen vanity or tallboy is mounted on legs, you can select from these options below.

Angled Leg*



Chrome		
SKU	RRP	
200mm	ANG-LEG-200-CR	\$52



Brushed Nickel		
SKU	RRP	
200mm	ANG-LEG-200-BN	\$52



Black		
SKU	RRP	
200mm	ANG-LEG-200-BL	\$52



Brushed Gold		
SKU	RRP	
200mm	ANG-LEG-200-BG	\$52

Arrow Leg



Chrome		
SKU	RRP	
150mm	ARR-LEG-150-CR	\$52



Brushed Nickel		
SKU	RRP	
150mm	ARR-LEG-150-BN	\$52



Black		
SKU	RRP	
150mm	ARR-LEG-150-BL	\$52



Brushed Gold		
SKU	RRP	
150mm	ARR-LEG-150-BG	\$52

Edge Leg



Chrome		
SKU	RRP	
200mm	EDG-LEG-200-CR	\$52



Brushed Nickel		
SKU	RRP	
200mm	EDG-LEG-200-BN	\$52



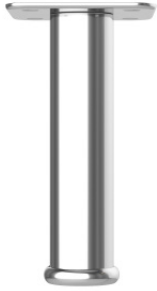
Black		
SKU	RRP	
200mm	EDG-LEG-200-BL	\$52



Brushed Gold		
SKU	RRP	
200mm	EDG-LEG-200-BG	\$52

Round Leg

Legs can be adjusted within 150mm – 166mm height.



Chrome		
	SKU	RRP
150mm	RND-LEG-150-CR	\$52

Square Leg

Legs can be adjusted within 150mm – 166mm height.

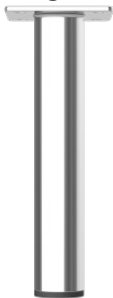


Chrome		
	SKU	RRP
150mm	SQR-LEG-150-CR	\$52



Black		
	SKU	RRP
150mm	SQR-LEG-150-BL	\$52

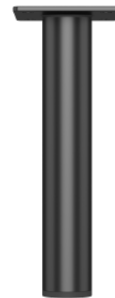
Straight Leg*



Chrome		
	SKU	RRP
150mm	STR-LEG-150-CR	\$52



Brushed Nickel		
	SKU	RRP
150mm	STR-LEG-150-BN	\$52



Black		
	SKU	RRP
150mm	STR-LEG-150-BL	\$52



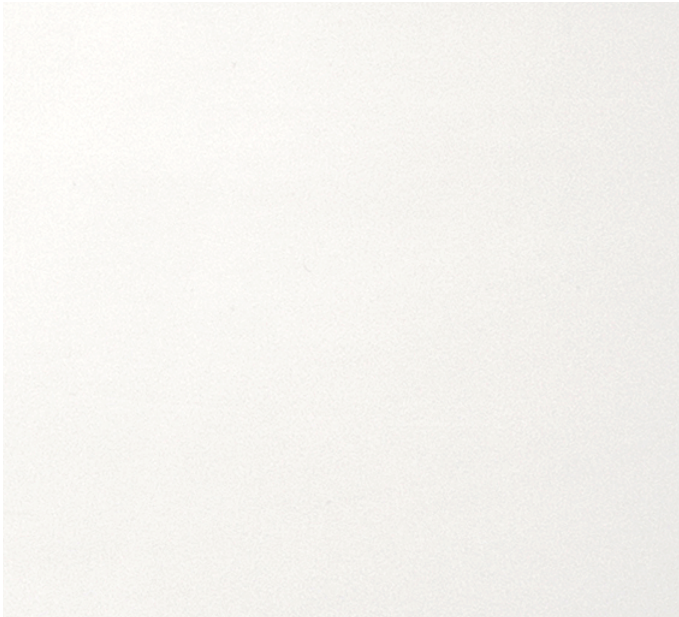
Brushed Gold		
	SKU	RRP
150mm	STR-LEG-150-BG	\$52

NOTE: Cabinet height of the 'on legs' unit will vary depending on legs choice. Legs are decorative, not functional (the cabinet must still be mounted to the wall).
 *Denotes legs suitable for the Sutherland House Vanity and Tallboy.

SilkSurface Colours

SilkSurface™

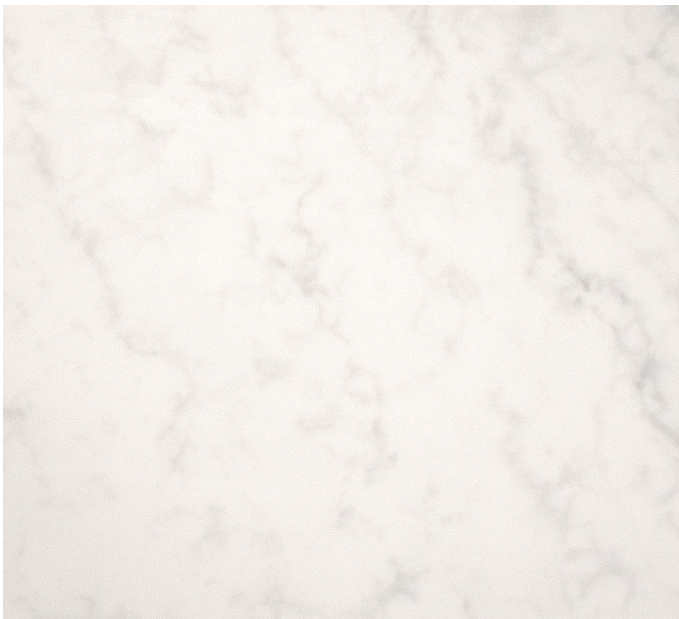
SilkSurface is the right choice for enduring beauty. With a beautiful blend of colours and a realistic natural appearance, these high performance 20mm benchtops are manufactured using a special multi-process technique making them resistant to stains, cracks and chips.



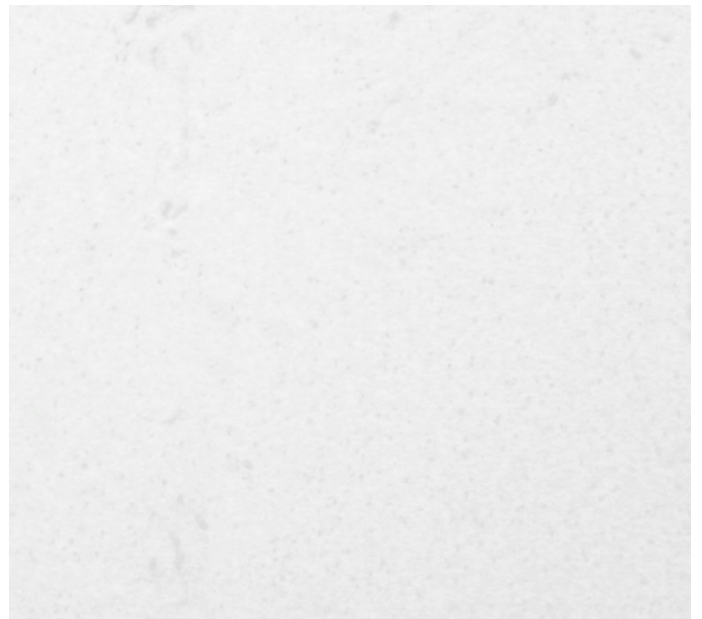
Arctic White



Star Dust



Carrara



Calcutta Snow

SilkSurface may be substituted for equivalent colours if required. SilkSurface is manmade slab with an acrylic resin base. As each slab is individual, natural variation in graining and colouring is to be expected. While the colours in this brochure are to the highest standard in printing, it should only be used as an indication of actual product design. Please visit your local showroom to view larger samples.



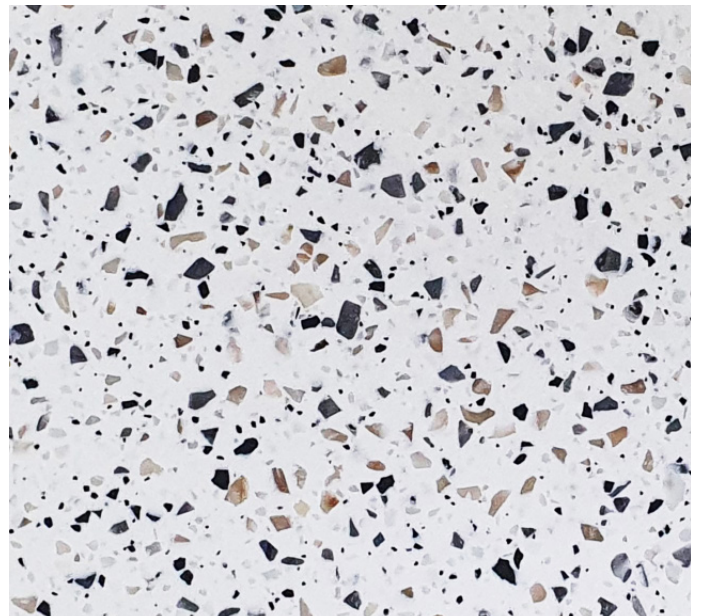
Silk Whisper



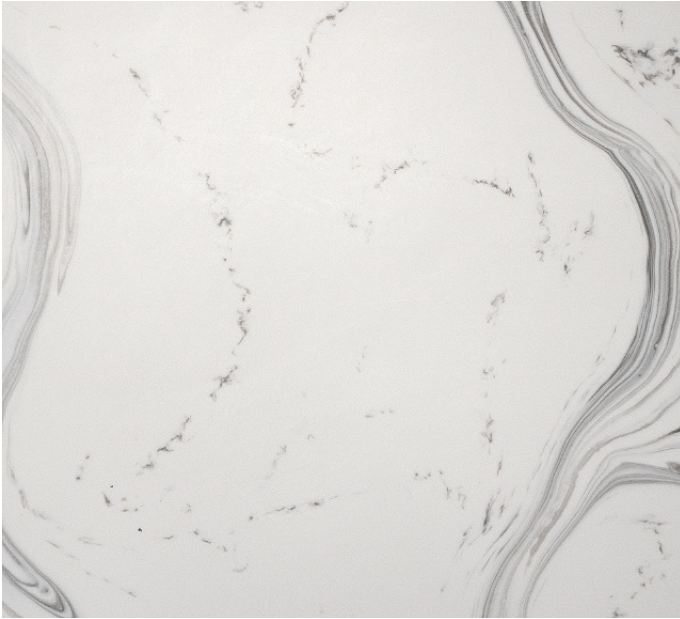
Luminice



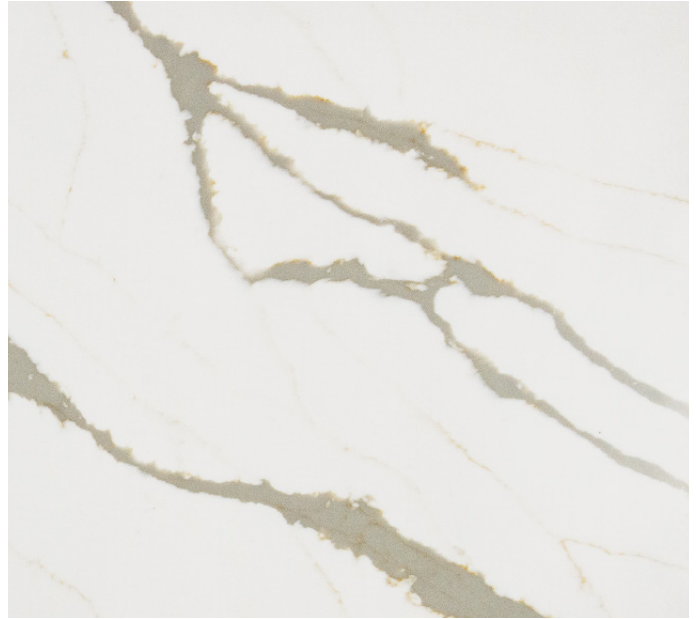
Stratiss



Lapis Salt



Bianco Pearl



Bronzite

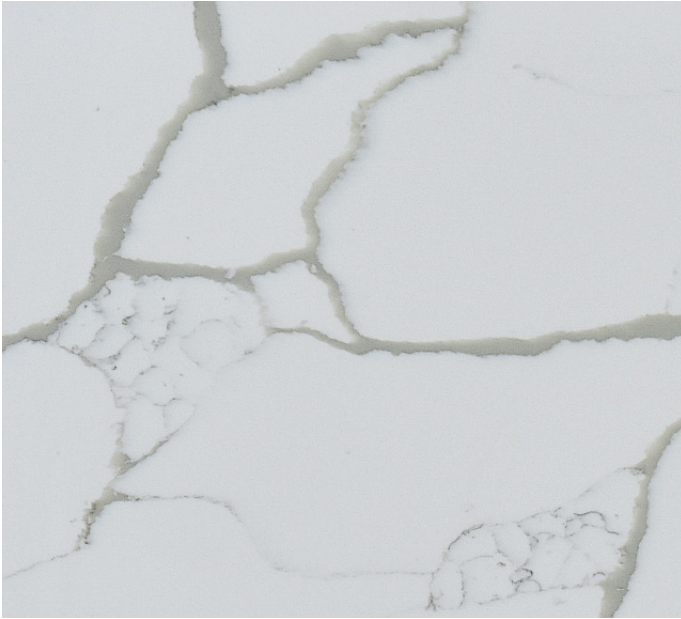


Ice Nuovo

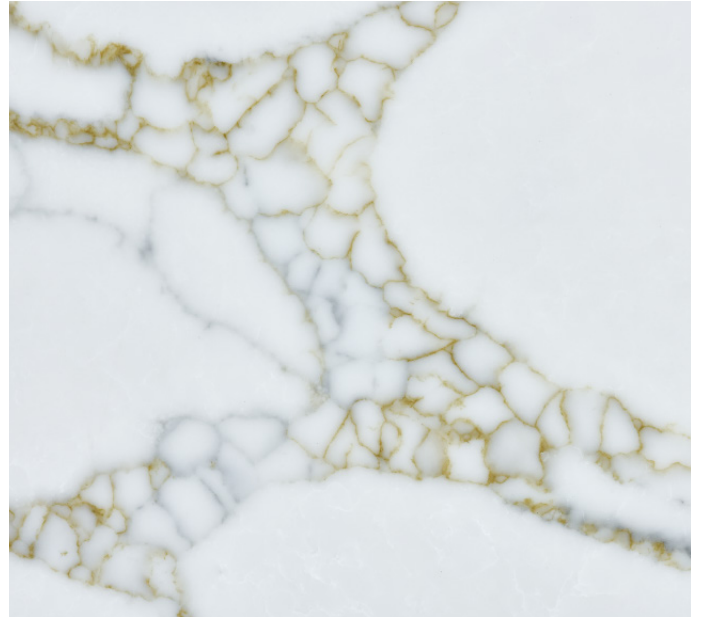


Opalora

SilkSurface may be substituted for equivalent colours if required. SilkSurface is manmade slab with an acrylic resin base. As each slab is individual, natural variation in graining and colouring is to be expected. While the colours in this brochure are to the highest standard in printing, it should only be used as an indication of actual product design. Please visit your local showroom to view larger samples.



Lustra Silk



Topaz



Riverina



Albaster



Canvas Mist



White Crystal Boulder

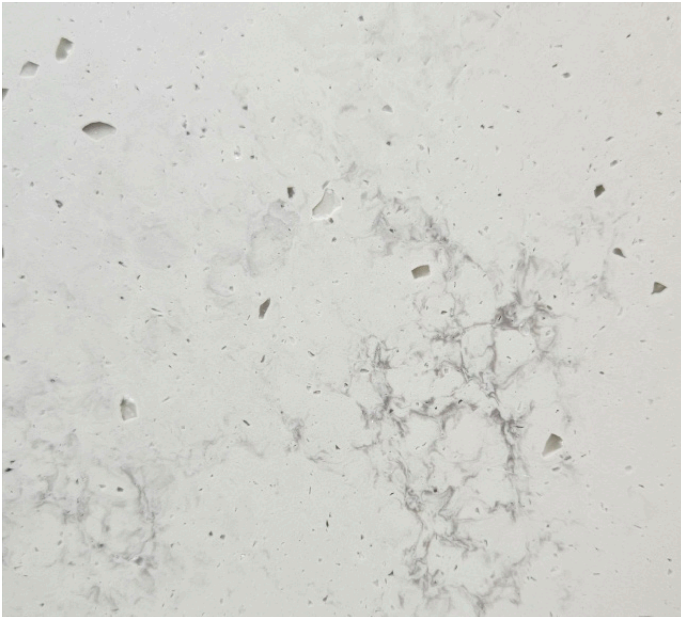


Blanca Granite



Morning Mist

SilkSurface may be substituted for equivalent colours if required. SilkSurface is manmade slab with an acrylic resin base. As each slab is individual, natural variation in graining and colouring is to be expected. While the colours in this brochure are to the highest standard in printing, it should only be used as an indication of actual product design. Please visit your local showroom to view larger samples.



Organica



Cobblonite



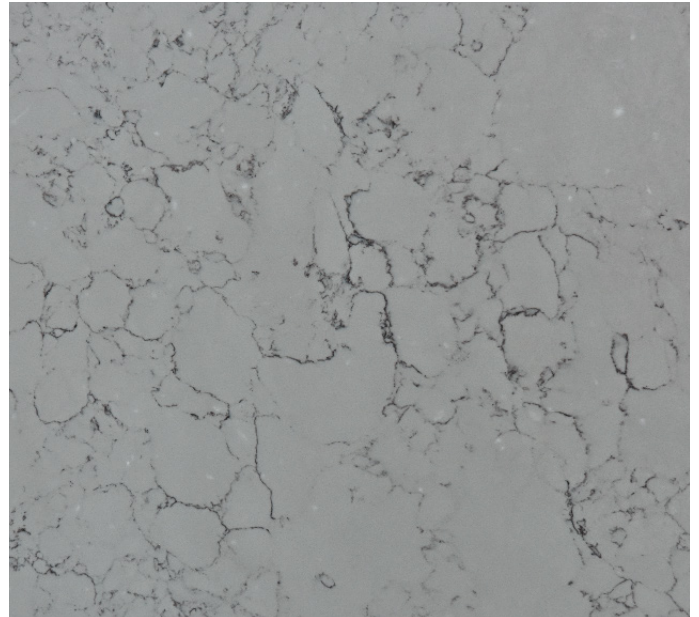
Grigio Stone



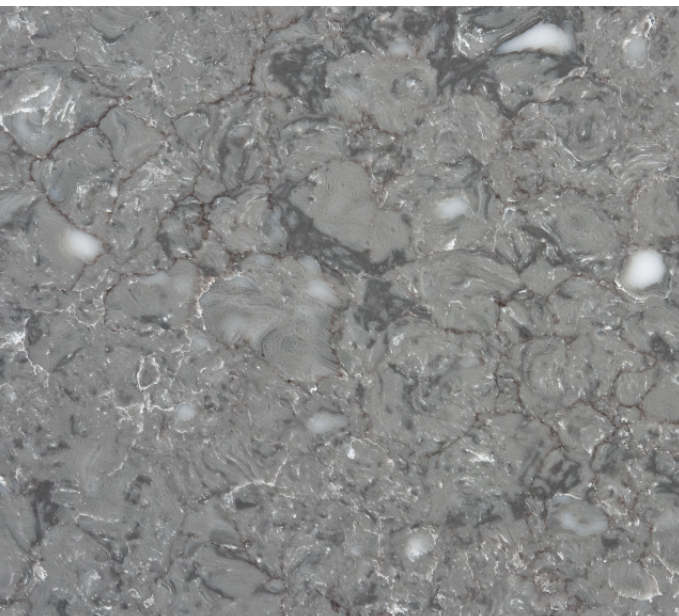
Terranite



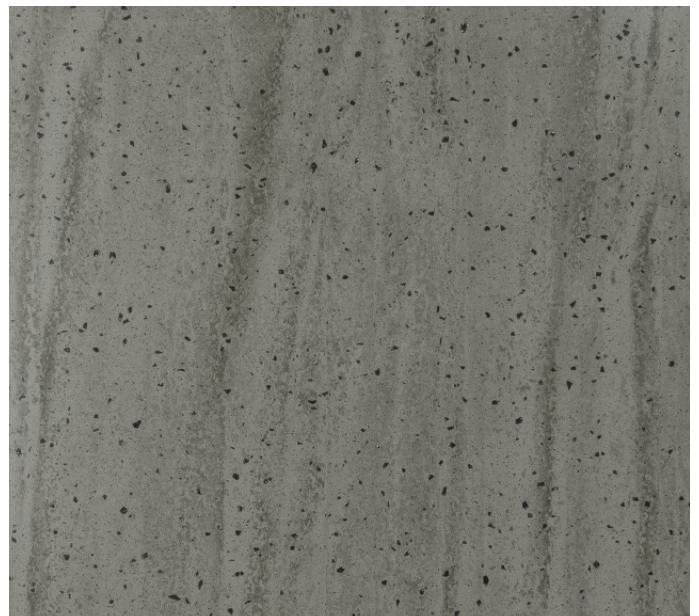
Moonstone



Stratiss Nuovo



Terramoss

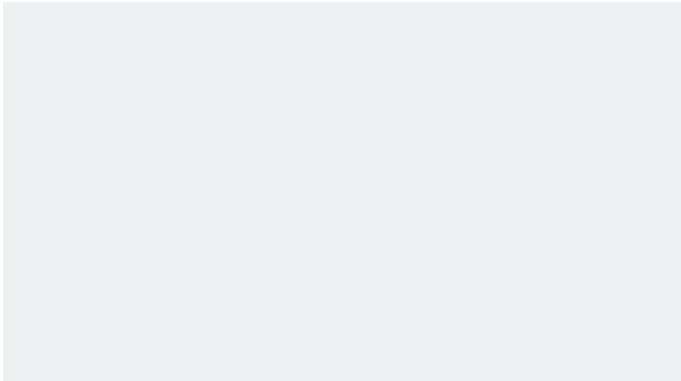


Storm Cloud

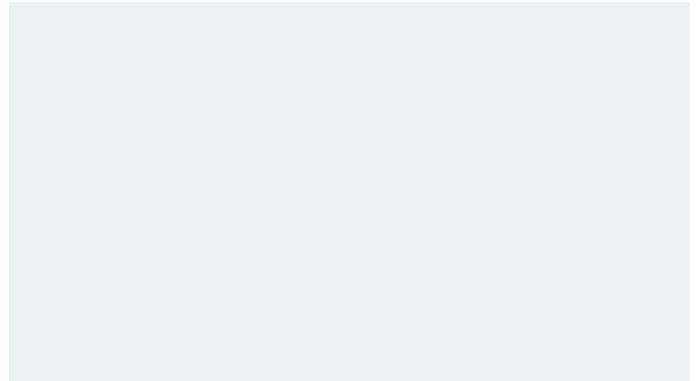
SilkSurface may be substituted for equivalent colours if required. SilkSurface is manmade slab with an acrylic resin base. As each slab is individual, natural variation in graining and colouring is to be expected. While the colours in this brochure are to the highest standard in printing, it should only be used as an indication of actual product design. Please visit your local showroom to view larger samples.

Standard Paint Colours

If you're after a sleek, clean look or just wanting to bring colour into your bathroom, then a painted finish is the perfect choice. All painted colours are finished with our durable 2 pack polyurethane hardening process, which makes them easy to clean and hard-wearing.



White Gloss



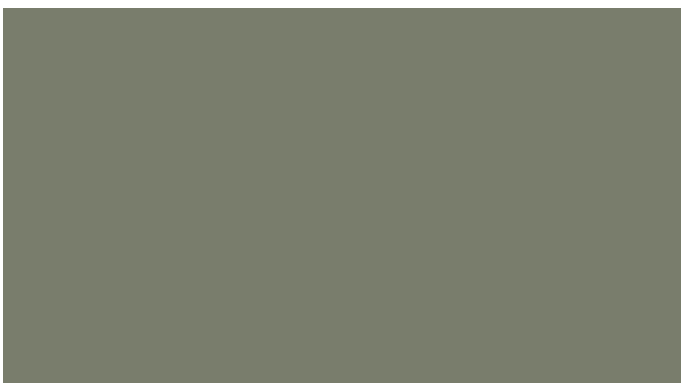
White Satin



Grey Beige Satin



Light Pistachio Satin

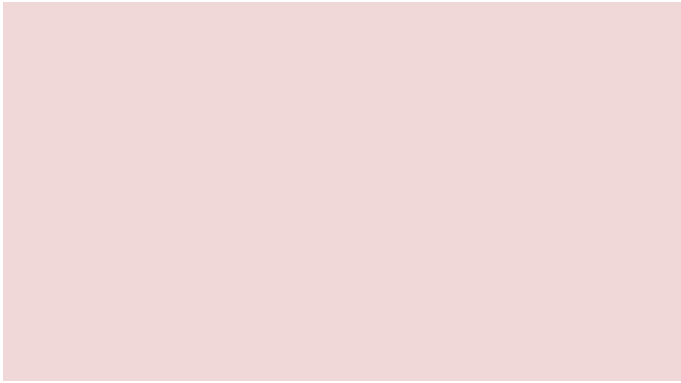


Olive Satin



Emerald Green Satin

NOTE: Shaker routed vanities are only available in painted finishes. Satin finish standard unless specified for pastel colours. **Note for Special Colours:** Gloss finishes look distinctly different to sample matt finishes. Painted colours can vary slightly between batches. While the colours in this brochure are to the highest standard in printing, it should only be used as an indication of actual product design. Please visit your local showroom to view larger samples.



Pastel Pink Satin



Light Grey Satin



Dark Grey Satin



Steel Grey Satin



Navy Blue Satin



Black Satin

Standard Woodgrain Colours

Woodgrain finishes capture the colour and texture of natural timbers such as oak, maple and walnut. They add warmth and colour to your bathroom while being ultra durable, easy to clean and affordable. Choose any of these colours - at no extra cost!



LAMINEX White Painted Wood Matt



LAMINEX Concrete Formwood Texture



LAMINEX Classic Oak Texture



POLYTEC Angora Oak Woodmatt



POLYTEC Coastal Oak Woodmatt



LAMINEX Rural Oak Texture

Note for woodgrain cabinets: Due to manufacturing process grain patterns do not line up across panels. Horizontal grain is standard on vanity units. Grain direction may vary for tallboys and shavers. Some woodgrains have a matt finish while others have a realistic texture. While the colours in this brochure are to the highest standard in printing, it should only be used as an indication of actual product design. Please visit your local showroom to view larger samples. Colours may be substituted for alternative matching brands.



POLYTEC Boston Oak Woodmatt



POLYTEC Prime Oak Woodmatt



LAMINEX Tassie Oak Texture



LAMINEX Elegant Oak Texture



LAMINEX Planked Urban Oak Texture



LAMINEX Artisan Beamwood Texture

NOTE: Woodgrain finishes are not available on shaker routed cabinets.



LAMINEX Oxidised Beamwood Texture



POLYTEC Notaio Walnut Woodmatt



POLYTEC Antico Oak Woodmatt



LAMINEX Milano Walnut Matt



POLYTEC Florentine Walnut Woodmatt



LAMINEX Aged Walnut Texture

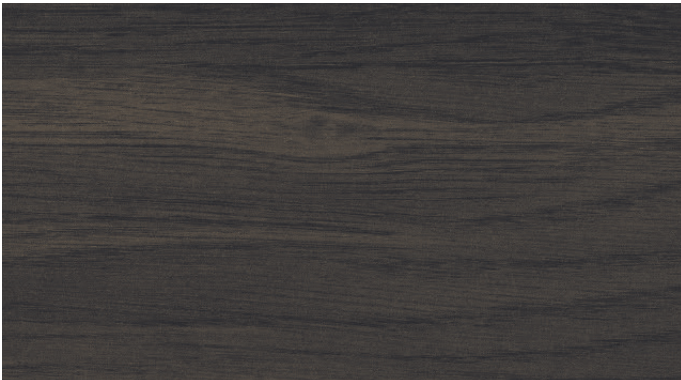
Note for woodgrain cabinets: Due to manufacturing process grain patterns do not line up across panels. Horizontal grain is standard on vanity units. Grain direction may vary for tallboys and shavers. Some woodgrains have a matt finish while others have a realistic texture. While the colours in this brochure are to the highest standard in printing, it should only be used as an indication of actual product design. Please visit your local showroom to view larger samples. Colours may be substituted for alternative matching brands.



POLYTEC Palomera Oak Woodmatt



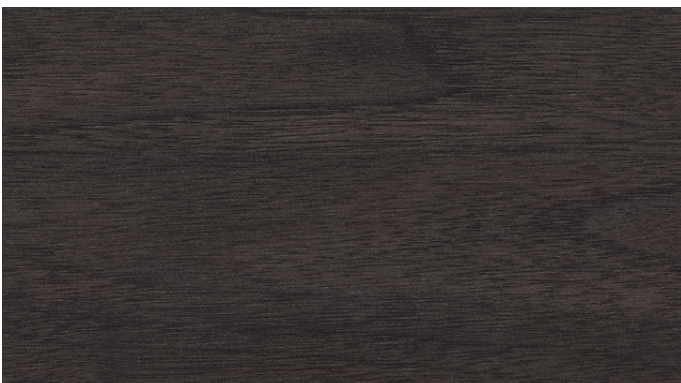
POLYTEC Havana Oak Woodmatt



POLYTEC Bottega Oak Woodmatt



POLYTEC Estella Oak Woodmatt



POLYTEC Perugian Walnut Woodmatt

NOTE: Woodgrain finishes are not available on shaker routed cabinets.