

Lighting Information Guide



Under Cabinet Lighting

INFORMATION GUIDE

An electrician will be required to provide in wall wiring and provision for an on/off switch before the bathroom walls are sheeted or tiled. When LED is selected cabinet size may vary slightly.

Warm white LED lighting is powered by a DC24V transformer, which comes with a 3-pin plug for connecting to an existing GPO or can be stripped off and hardwired in by your electrician.

As standard, your electrician should drop power down to the right-hand side of your shaver, and to behind the drawers in your vanity (or right-hand side in all-drawer models) in preparation for your new install. We can customise this side if your new bathroom design requires it – just speak with your store about your options.

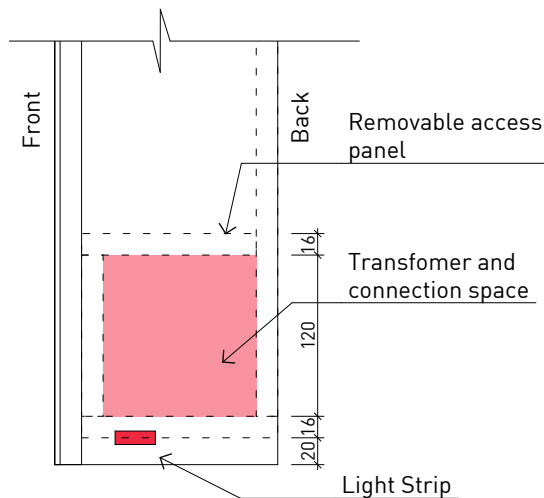
Your electrician will need to provide on/off options when wiring in. An optional dimmer can also be purchased for light level adjustment.

Lighting is warm white as standard, cool available upon request. Technical details below;

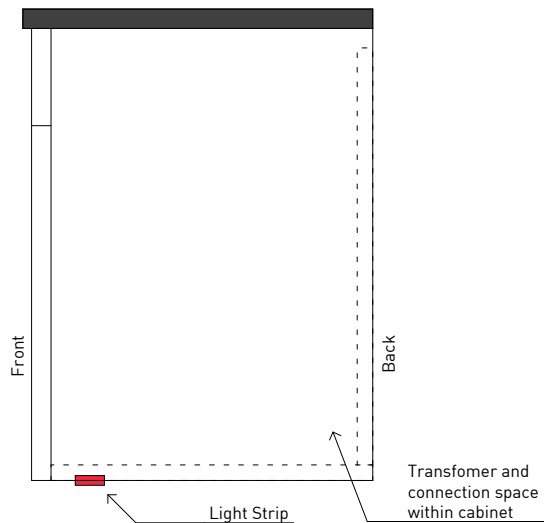
- 9w per metre
- 3000K warm white
- 360 lumens

If further information is required by your electrician, please feel free to contact Timberline directly for further technical specifications.

Shaving Cabinets



Vanities



NOTE: The lighting will be attached to the base panel of the shaver or vanity. For the Kansas, Karlie and Sanremo, the lighting will be attached to the base panel of the cabinet NOT attached to the base of the open shelf.



Images of Lighting Installed



Lighting Connection Layout

Under Top Lighting

INFORMATION GUIDE

An electrician will be required to provide in wall wiring and provision for an on/off switch before the bathroom walls are sheeted or tiled. When LED is selected cabinet size may vary slightly.

Warm white LED lighting is powered by a DC24V transformer, which comes with a 3-pin plug for connecting to an existing GPO or can be stripped off and hardwired in by your electrician.

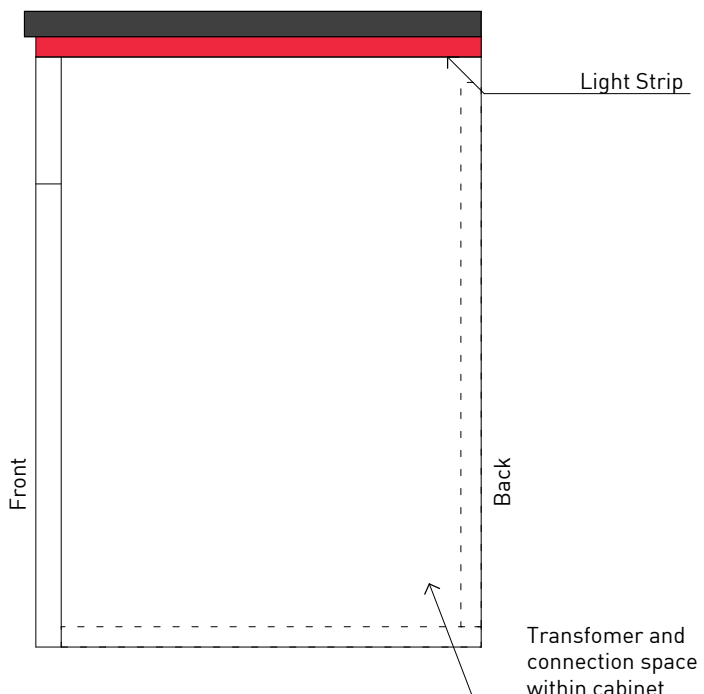
As standard, your electrician should drop power down behind the drawers in your vanity (or right-hand side in all-drawer models) in preparation for your new install. We can customise this side if your new bathroom design requires it – just speak with your store about your options.

Your electrician will need to provide on/off options when wiring in. An optional dimmer can also be purchased for light level adjustment.

Lighting is warm white as standard, cool available upon request. Technical details below;

- 9w per metre
- 3000K warm white
- 360 lumens

If further information is required by your electrician, please feel free to contact Timberline directly for further technical specifications.



Under Top Lighting



Lighting Connection Layout

Mirror Lighting

INFORMATION GUIDE

An electrician will be required to provide in wall wiring and provision for an on/off switch before the bathroom walls are sheeted or tiled. When LED is selected cabinet size may vary slightly.

Warm white LED lighting is powered by a DC24V transformer, which comes with a 3-pin plug for connecting to an existing GPO or can be stripped off and hardwired in by your electrician.

As standard, your electrician should drop power down to the centre of your mirror in preparation for your new install.

Your electrician will need to provide on/off options when wiring in. An optional dimmer can also be purchased for light level adjustment.

Lighting is warm white as standard, cool available upon request. Technical details below;

- 9w per metre
- 3000K warm white
- 360 lumens

If further information is required by your electrician, please feel free to contact Timberline directly for further technical specifications.



Lighting Connection Layout



Halifax Mirror

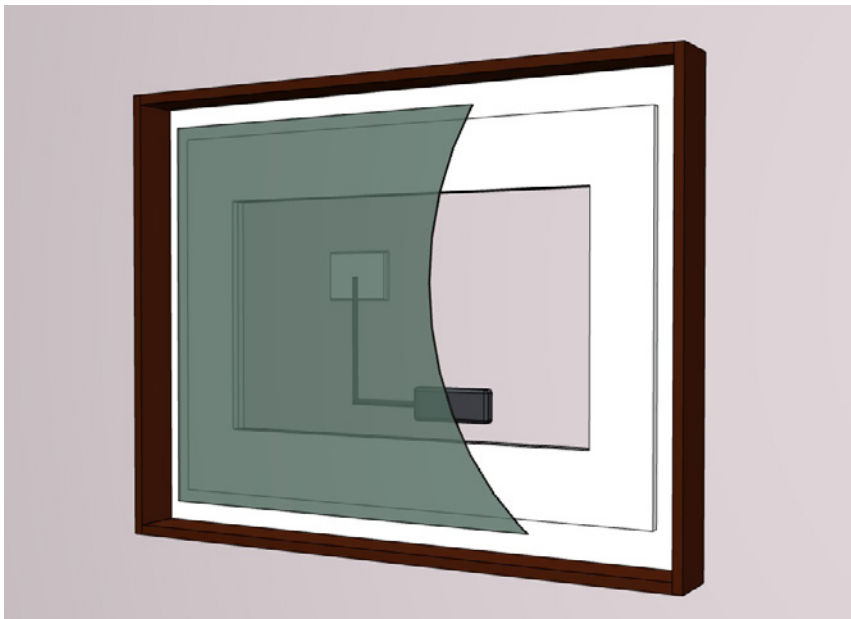
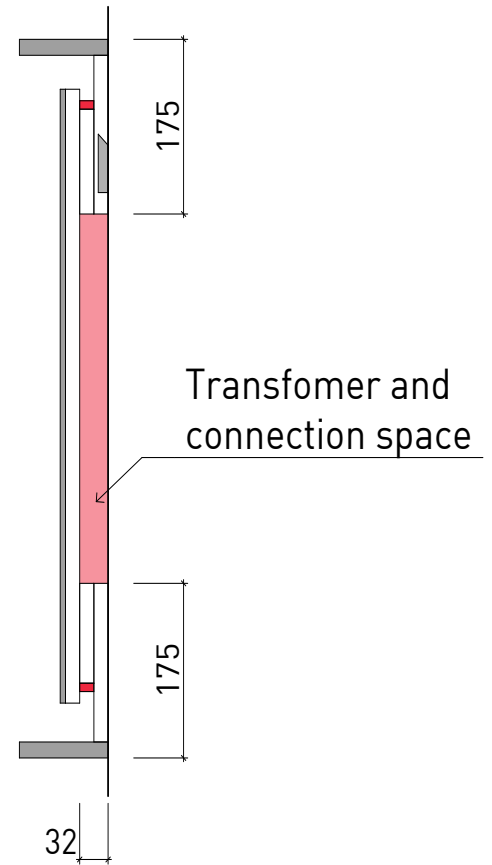
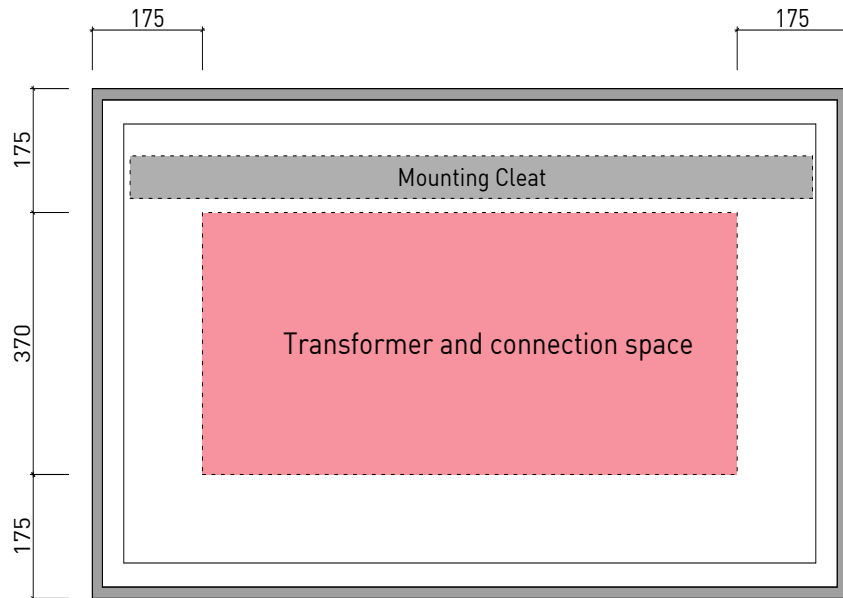


Brooklyn Mirror



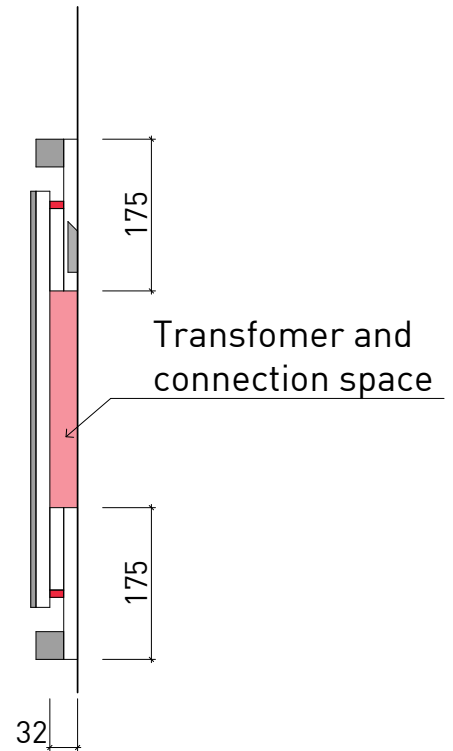
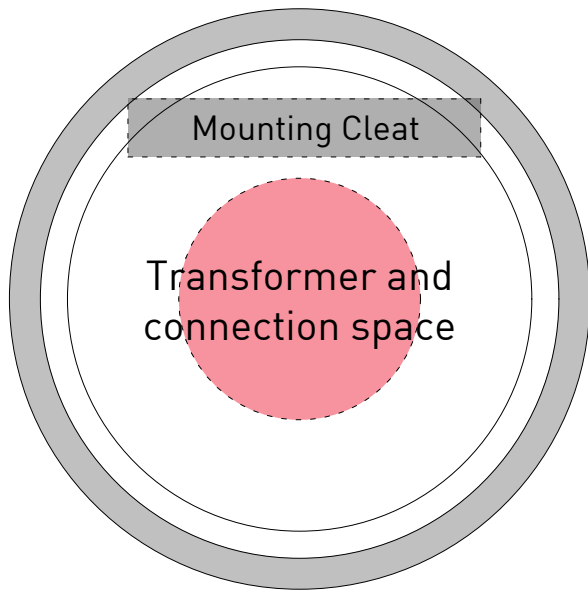
Other Mirrors

Halifax Mirror



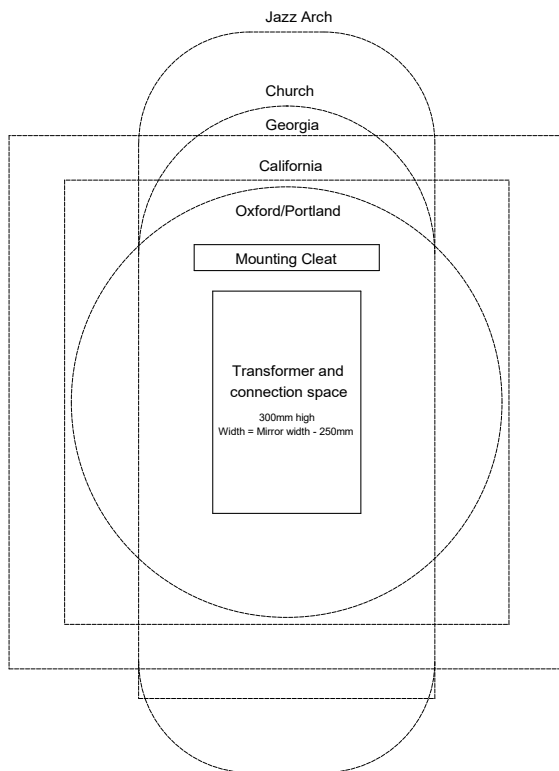
Brooklyn Mirror

—



Other Mirrors

—



Note: Mounting cleat length varies according to mirror size

Denver Side Lighting

INFORMATION GUIDE

An electrician will be required to provide in wall wiring and provision for an on/off switch before the bathroom walls are sheeted or tiled. When LED is selected cabinet size may vary slightly.

Warm white LED lighting is powered by a DC24V transformer, which comes with a 3-pin plug for connecting to an existing GPO or can be stripped off and hardwired in by your electrician.

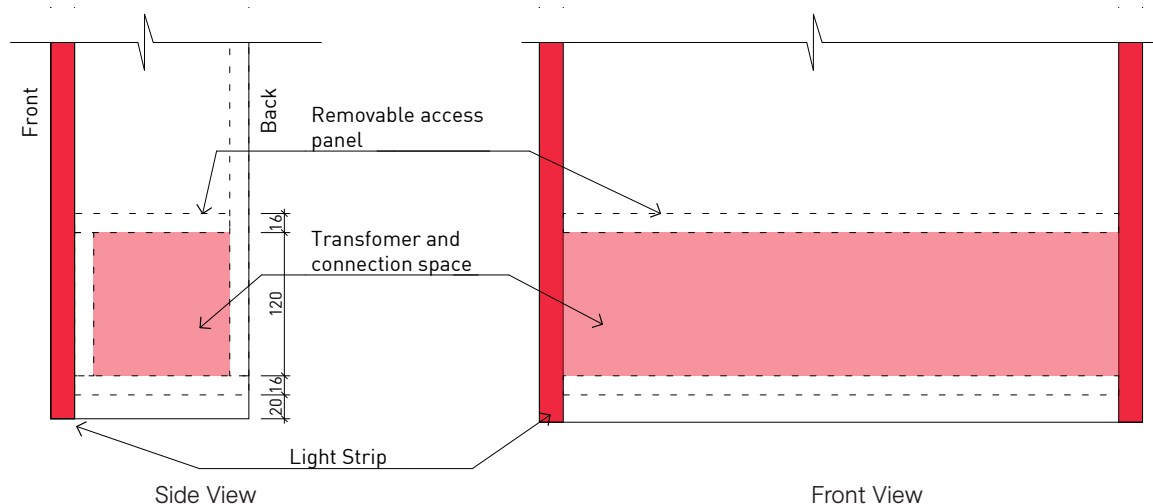
As standard, your electrician should drop power down to the right-hand side of your shaver in preparation for your new install. We can customise this side if your new bathroom design requires it – just speak with your store about your options.

Your electrician will need to provide on/off options when wiring in. An optional dimmer can also be purchased for light level adjustment.

Lighting is warm white as standard, cool available upon request. Technical details below;

- 9w per metre
- 3000K warm white
- 360 lumens

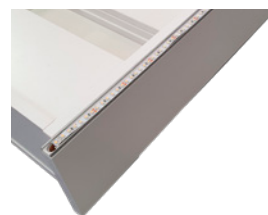
If further information is required by your electrician, please feel free to contact Timberline directly for further technical specifications.



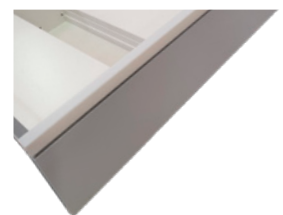
Denver Side Lighting



Lighting Connection Layout



Bare LED Strip



Diffuser cover attached