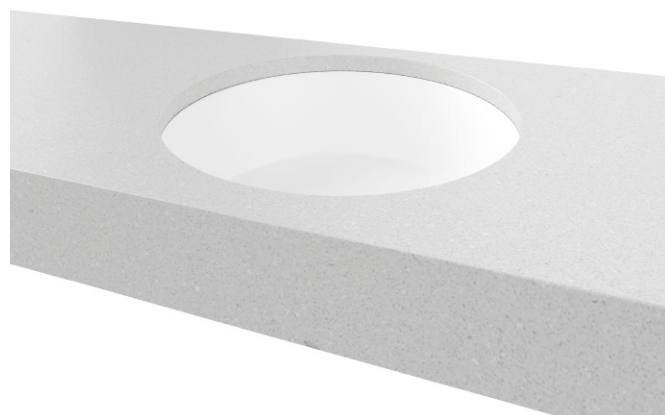
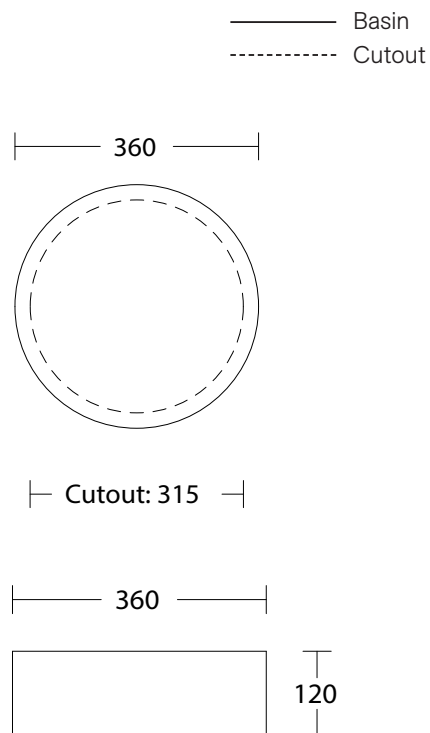


## Allure Under Counter

<b>WG</b> White Gloss	<b>WM</b> White Matt	<b>BM</b> Black Matt	<b>ANT</b> Anthracite	<b>GM</b> Grey Matt	<b>LGM</b> Light Grey Matt	<b>PM</b> Pink Matt
ALLU-BS-360-WG-S	ALLU-BS-360-WM-U	ALLU-BS-360-BM-U	ALLU-BS-360-ANT-U	ALLU-BS-360-GM-U	ALLU-BS-360-LGM-U	ALLU-BS-360-PM-U

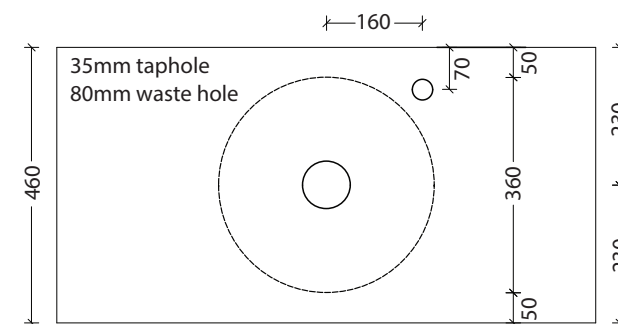


Under Counter

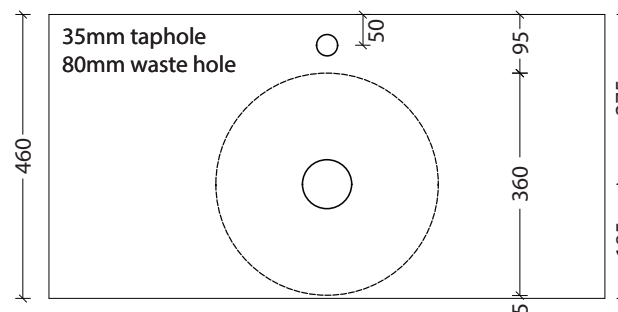


Drawings

Taphole Offset



Taphole Behind



Cut Out Specifications

**Material:** Ceramic

**Approx Capacity:** 8.5L

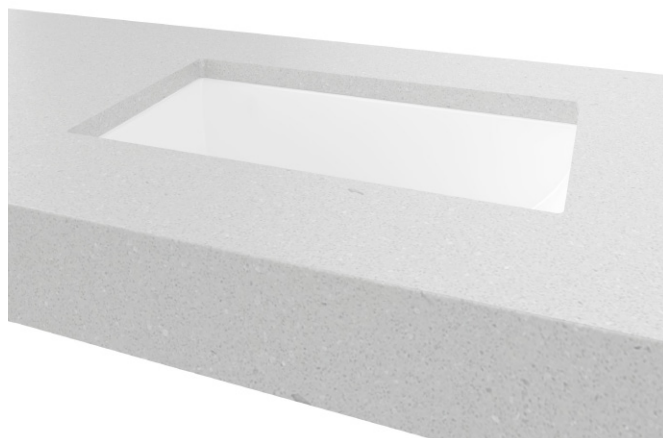
**Cut Out Size:** 315mm

**Waste Size:** 32mm without overflow

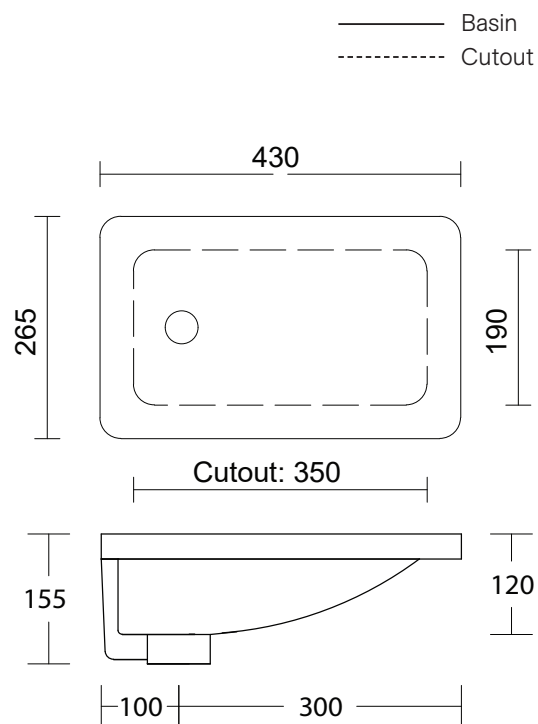
**Note:** Due to the manufacturing process, ceramic basins will vary from their nominal stated sizes. Use the dimensions provided as a guide only. Waste not included. Refer to brochure for pricing.

## Mini Rectangle Under Counter

**WG** White Gloss  
MRE-BS-425-WG-S

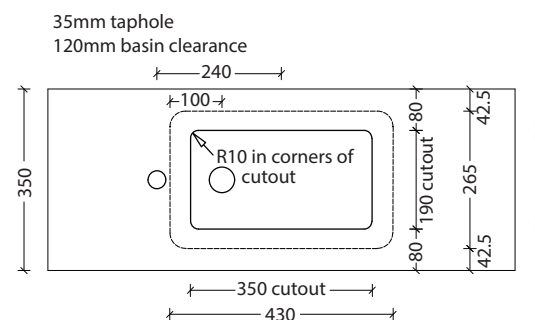


Under Counter



Drawings

### Taphole Offset



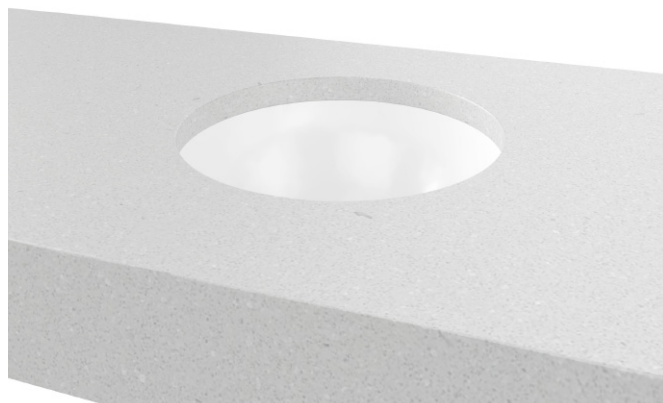
Cut Out Specifications

**Material:** Ceramic  
**Approx Capacity:** 5.2L  
**Cut Out Size:** 350w x 190d  
**Waste Size:** 32mm with overflow

**Note:** Due to the manufacturing process, ceramic basins will vary from their nominal stated sizes. Use the dimensions provided as a guide only. Waste not included. Refer to brochure for pricing.

## Mini Round Under Counter

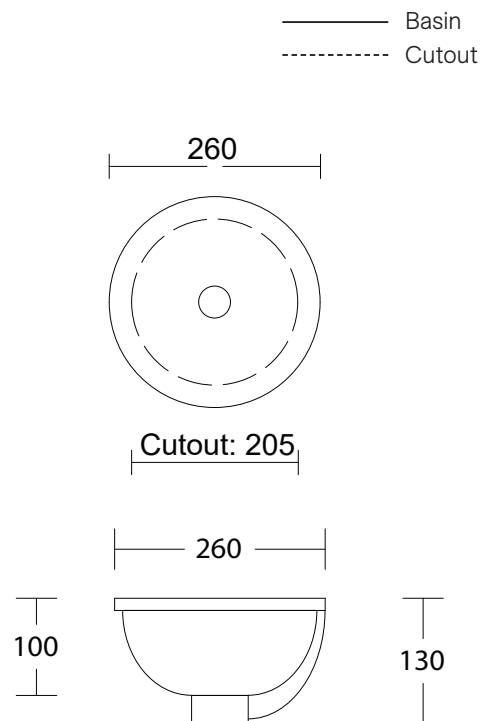
**WG** White Gloss  
MRO-BS-255-WG-S



Under Counter

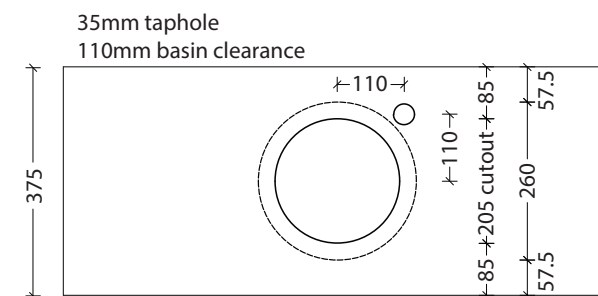
**Material:** Ceramic  
**Approx Capacity:** 2L  
**Cut Out Size:** 205mm  
**Waste Size:** 32mm with overflow

**Note:** Due to the manufacturing process, ceramic basins will vary from their nominal stated sizes. Use the dimensions provided as a guide only. Waste not included. Refer to brochure for pricing.

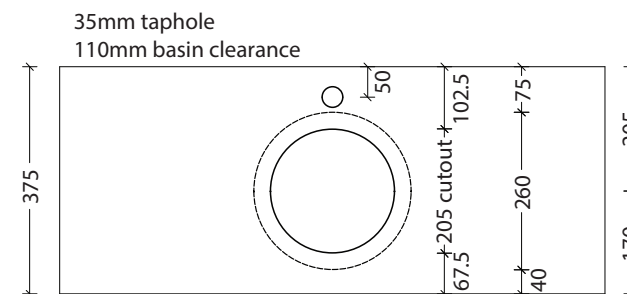


Drawings

Taphole Offset



Taphole Behind



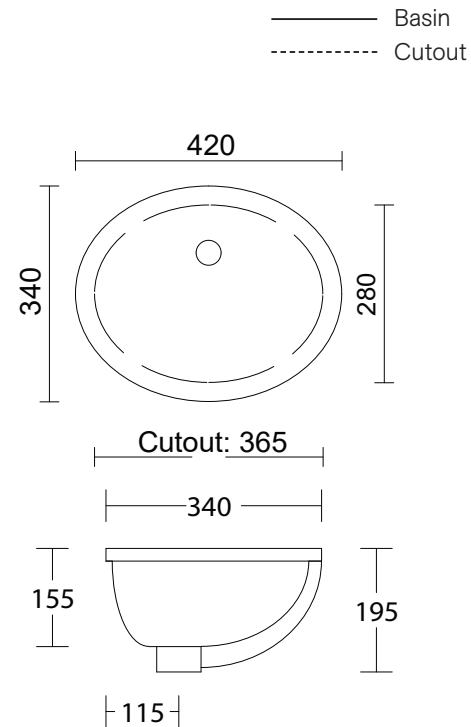
Cut Out Specifications

## Oval Under Counter

**WG** White Gloss  
OVL-BS-420-WG-S

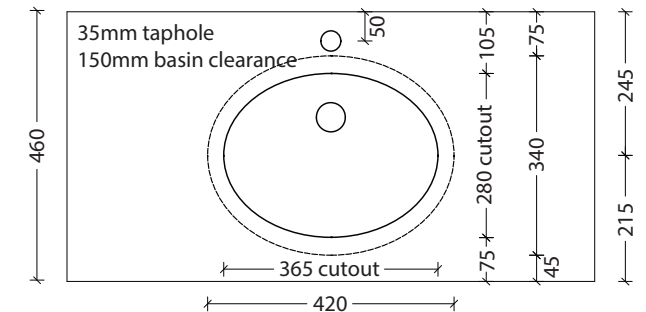


Under Counter

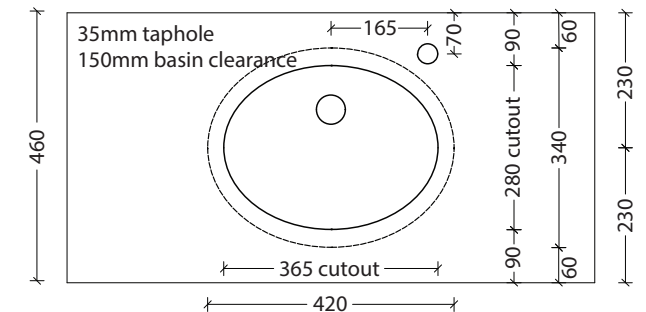


Drawings

Taphole Offset



Taphole Behind



Cut Out Specifications

**Material:** Ceramic  
**Approx Capacity:** 8.7L  
**Cut Out Size:** 365w x 280d  
**Waste Size:** 32mm with overflow

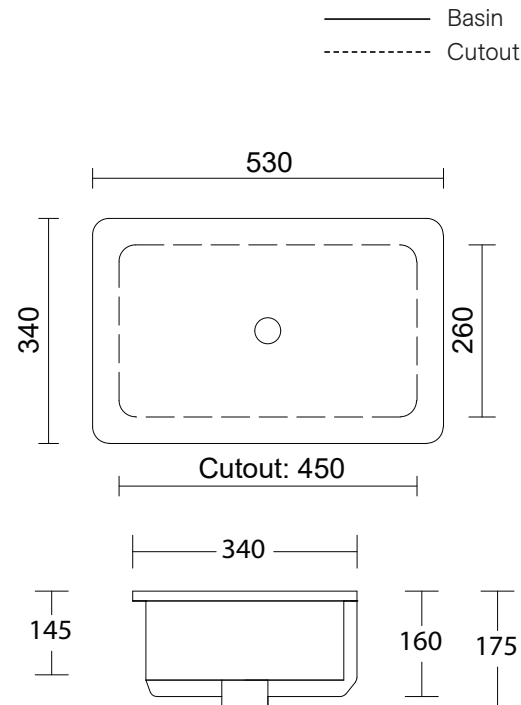
**Note:** Due to the manufacturing process, ceramic basins will vary from their nominal stated sizes. Use the dimensions provided as a guide only. Waste not included. Refer to brochure for pricing.

## Rectangle Under Counter

**WG** White Gloss  
REC-BS-530-WG-S

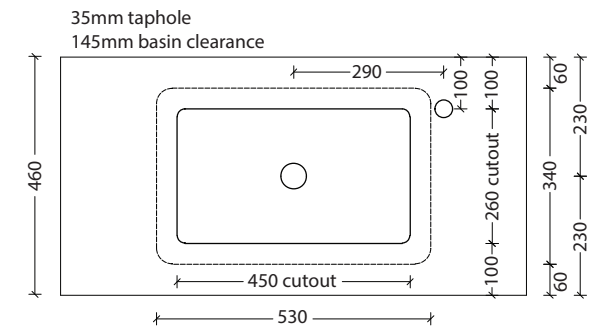


Under Counter

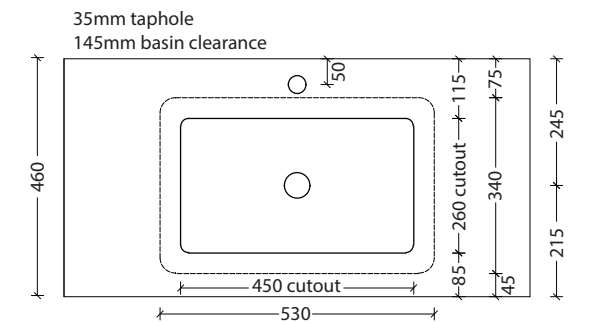


Drawings

Taphole Offset



Taphole Behind



Cut Out Specifications

**Material:** Ceramic  
**Approx Capacity:** 7.7L  
**Cut Out Size:** 450w x 260d  
**Waste Size:** 32mm with overflow

**Note:** Due to the manufacturing process, ceramic basins will vary from their nominal stated sizes. Use the dimensions provided as a guide only. Waste not included. Refer to brochure for pricing.