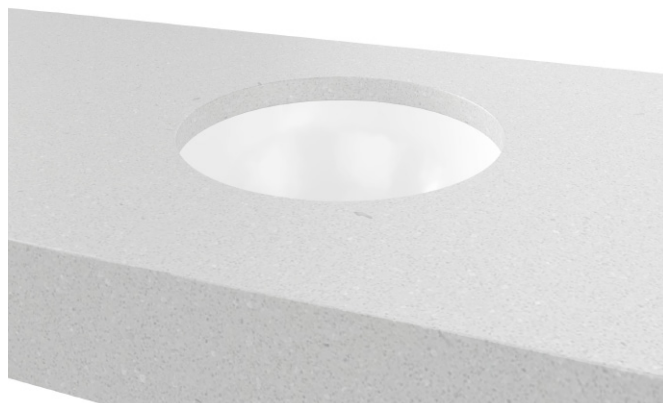


Mini Round Under Counter

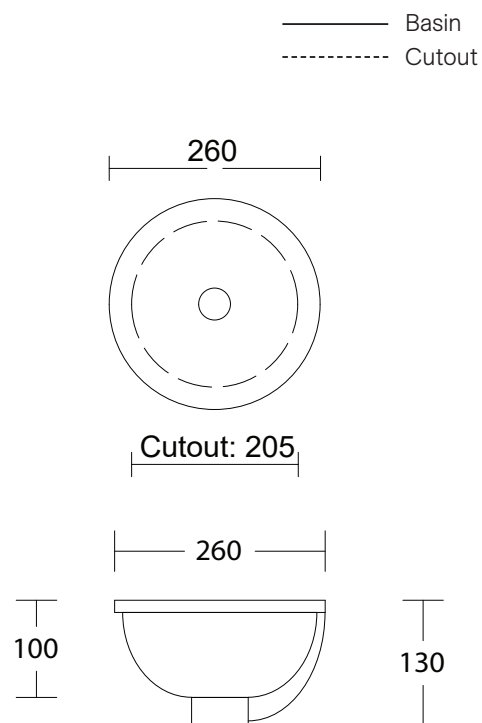
WG White Gloss
MRO-BS-255-WG-S



Under Counter

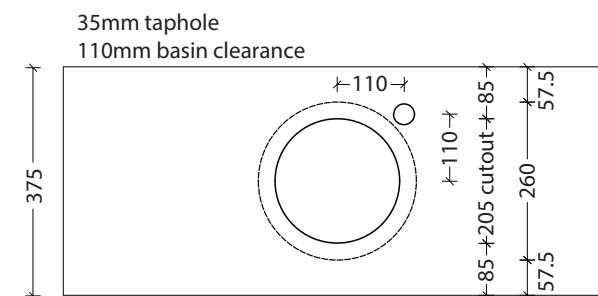
Material: Ceramic
Approx Capacity: 2L
Cut Out Size: 205mm
Waste Size: 32mm with overflow

Note: Due to the manufacturing process, ceramic basins will vary from their nominal stated sizes. Use the dimensions provided as a guide only. Waste not included. Refer to brochure for pricing.

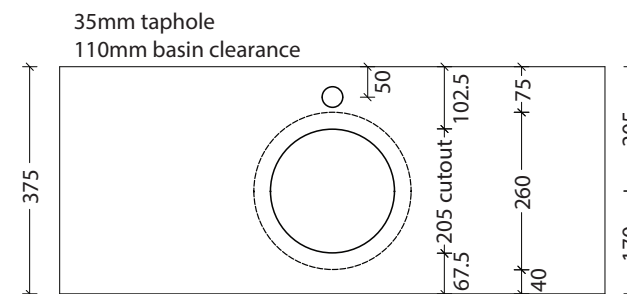


Drawings

Taphole Offset



Taphole Behind



Cut Out Specifications