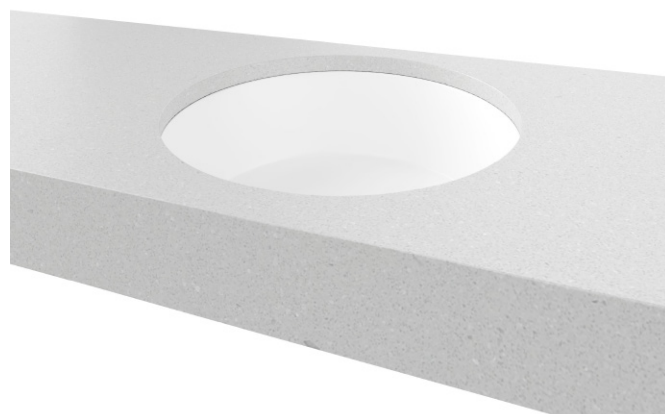
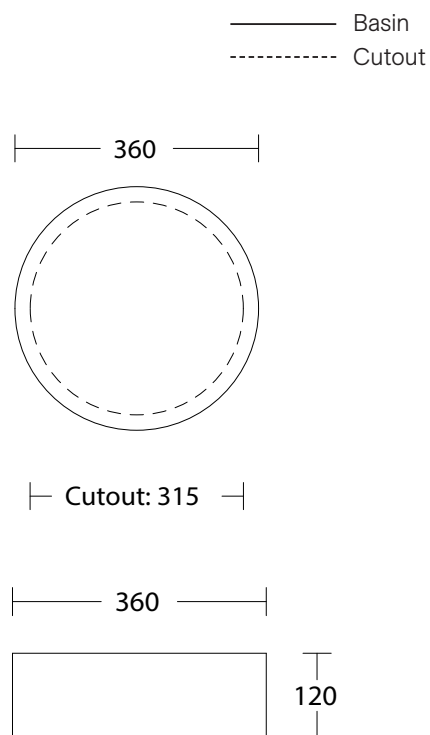


Allure Under Counter

WG White Gloss	WM White Matt	BM Black Matt	ANT Anthracite	GM Grey Matt	LGM Light Grey Matt	PM Pink Matt
ALLU-BS-360-WG-S	ALLU-BS-360-WM-U	ALLU-BS-360-BM-U	ALLU-BS-360-ANT-U	ALLU-BS-360-GM-U	ALLU-BS-360-LGM-U	ALLU-BS-360-PM-U

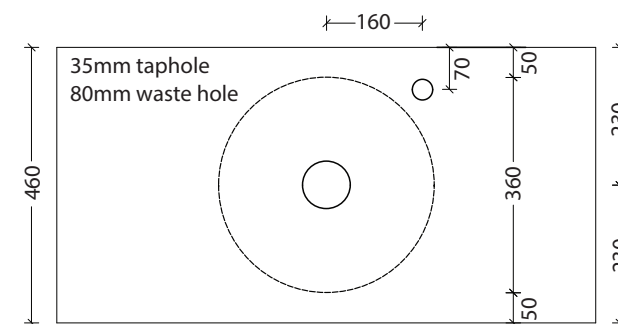


Under Counter

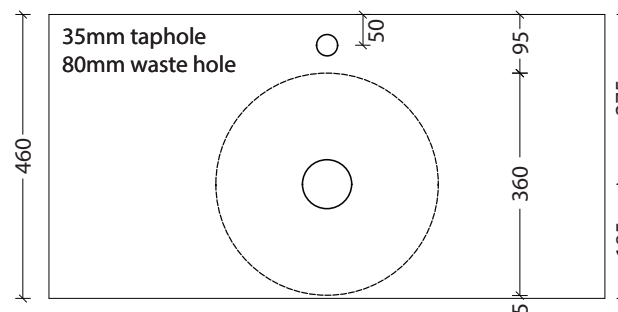


Drawings

Taphole Offset



Taphole Behind



Cut Out Specifications

Material: Ceramic

Approx Capacity: 8.5L

Cut Out Size: 315mm

Waste Size: 32mm without overflow

Note: Due to the manufacturing process, ceramic basins will vary from their nominal stated sizes. Use the dimensions provided as a guide only. Waste not included. Refer to brochure for pricing.